

fixelalgorithmsfixelalgorithms  
fixelalgorithmsfixelalgorithms  
fixelalgorithmsfixelalgorithms  
fixelalgorithmsfixelalgorithms  
fixelalgorithmsfixelalgorithms  
fixelalgorithmsfixelalgorithms  
fixelalgorithmsfixelalgorithms

fixel alce AE  
*Pixels' Saviour*



# Overview

*Fixel ALCE* is an **Local Contrast Enhancer**.

*ALCE* features novel algorithm, **to effectively improve and finely tune** the Local Contrast of the image.

*ALCE* applies “**Auto Levels**” locally on the image.

No more Tonal Curves which fit only part of the image and leave the others dull and neglected.

Using *ALCE* applies a **perfect “Auto Level” tuned according to the local tonal range of the pixels** within the radius of operation.

**Fixel ALCE** is **Multi CPU accelerated** and compatible with computers with **SSE4** and Up.

0011  
0110

Novel algorithm

PS

Adobe Photoshop  
CS6 & CC compatible

Multi  
CPU

Multi CPU  
accelerated

SSE4

Modern CPU  
Optimized code

32bit

32 Bit color depth  
internal processing

64bit

64 Bit compatible

# Showcase

Before



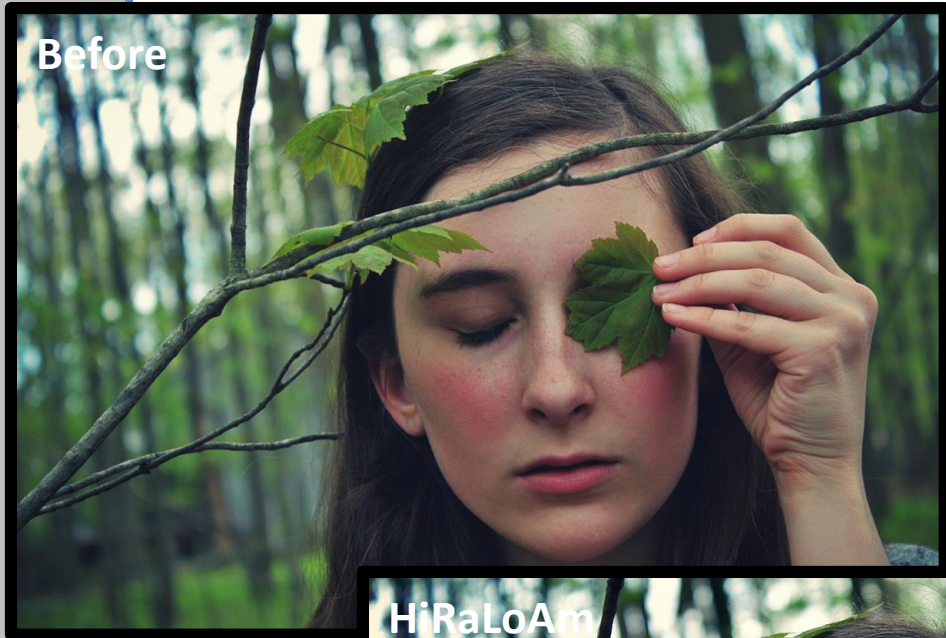
After





# Showcase

Before



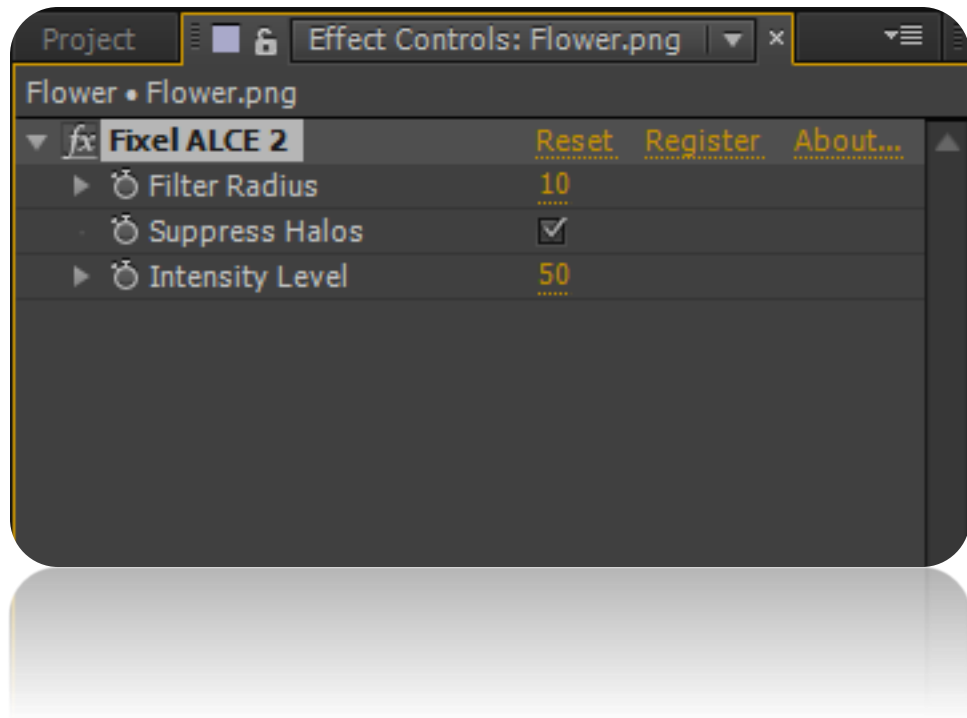
HiRaLoAm



LoRaHiAm



# Panel & Sliders (AE)



## + Filter Radius

Sets the radius of interest of the filter. Larger radius applies “Auto Levels” to a larger group of pixels, while small radius keep the effect more local.

## + Suppress Halos

Suppress Halos created by local abruptions in tonality of the image.

## + Intensity Level

Overall intensity of the effect.

# Installation Guide

- + **Close** Adobe After Effects if it is running.
- + **Unzip** the file "*Fixel ALCE 2 AE 2.x.xxx.zip*".  
*Locate the folder by type (Windows / OS X).*
- + **Windows Users:**  
Copy the unzipped file '*Fixel ALCE 2.x AE.aex*' to folder  
*C:\Program Files\Adobe\Adobe After Effects <Ver>\Support Files\Plug-ins\*
- + **Mac Users:**  
Copy the unzipped file '*Fixel ALCE 2.x AE.plugin*' to folder  
*Applications\Adobe After Effects <Ver>\Plugins*
- + **Fixel Algorithms Folder:**  
Any previous 2.x versions should be removed from the installation folder prior to installing new version.  
User is advised to create a sub folder named 'Fixel Algorithms'.
- + **Adobe Support for Plug In's:**
  - [After Effects / Plug-ins](#)
- + **Using the filter:**
  - Launch Adobe After Effects.
  - Open After Effects Project.
  - Open Fixel Algorithms Category in the Filter Panel.
  - Double click *Fixel ALCE 2*.
- + **Having problems ?**  
Licensing Guide: <http://aescripts.com/knowledgebase>  
Please contact us for support: [fixel@fixelalgorithms.com](mailto:fixel@fixelalgorithms.com)

# Thank You !

---

Thank you for buying Fixel Algorithm's product.  
We are doing our best efforts to deliver innovative, intuitive and useful products for our customers.

We invite you to visit [our page](#) at aeplugins.com.

If you have questions / feedback / complaints / suggestions on our product, please contact us –  
[fixel@fixelalgorithms.com](mailto:fixel@fixelalgorithms.com)