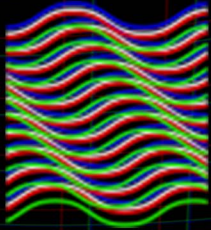


MOIRÉ



How to Install Moiré on macOS and Windows

The easiest way to install and license is by using the aescrpts + aeplugins manager. To install a trial you can select 'Add Trial' from the 'Account' menu.

[Click here to download the aescrpts + aeplugins manager!](#)

To install it manually go to 'My Downloads & Licenses' on aescrpts.com and download the script. [Click here to go there now!](#)

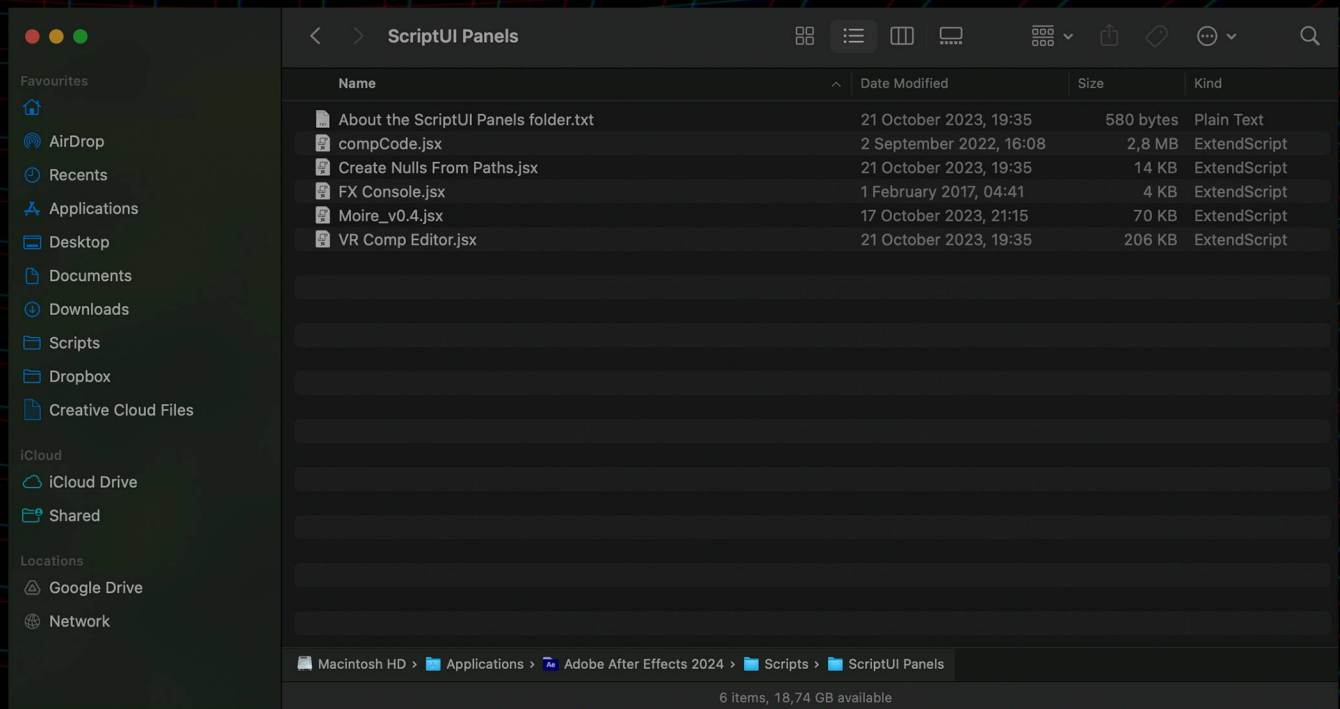
Step 1: Download the Script

Before you can install a script, you need to download it to your computer.

Step 2: Locate the Scripts Folder

For macOS:

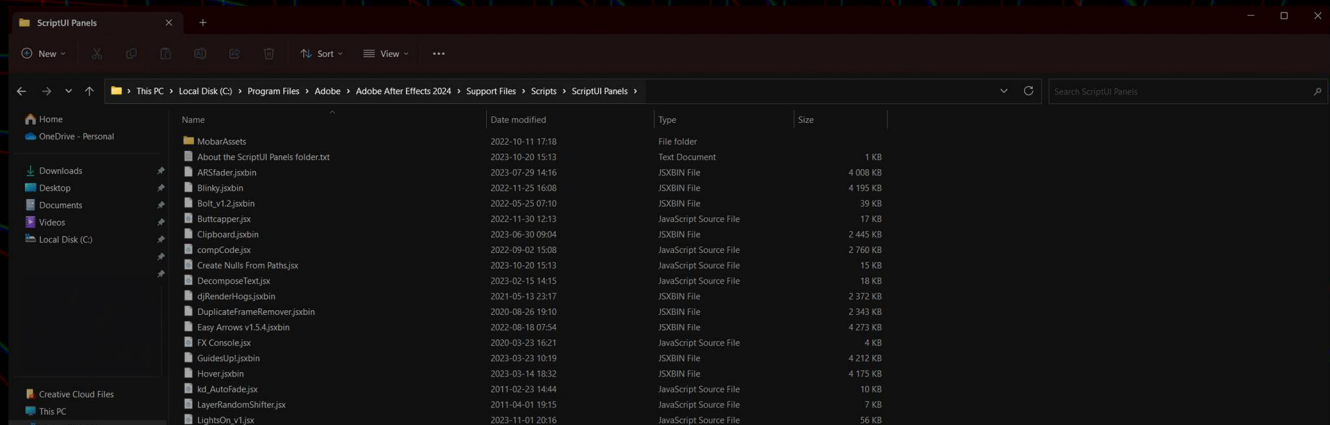
Navigate to the Applications folder, then find the Adobe After Effects folder, and then the Scripts folder. Path: [/Applications/Adobe After Effects <version>/Scripts/ScriptUI Panels/](#)

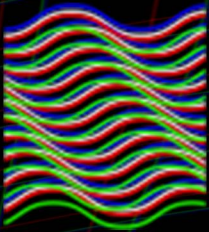


For Windows:

Navigate to the drive where you installed After Effects (usually the C: drive). Then find the Program Files folder, Adobe folder, Adobe After Effects folder, and finally the Scripts folder.

Path: [C:\Program Files\Adobe\Adobe After Effects <version>\Support Files\Scripts\ScriptUI Panels\](#)





Step 3: Copy the Script into the Scripts Folder

Drag and drop or copy and paste the script file (.jsx or .jsxbin) into the "ScriptUI Panels" folder.

Step 4: Launch Adobe After Effects

Open Adobe After Effects on your computer.

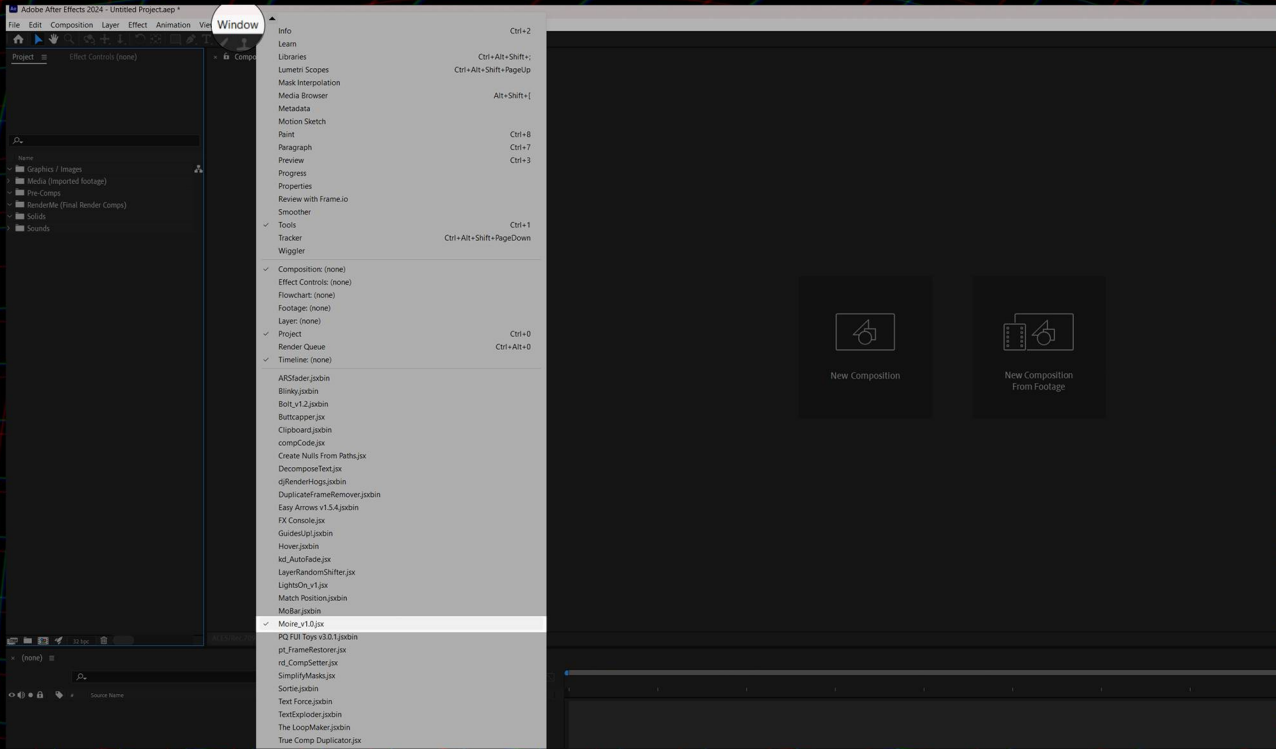
Step 5: Load the Script

For macOS and Windows:

Go to the menu bar at the top.

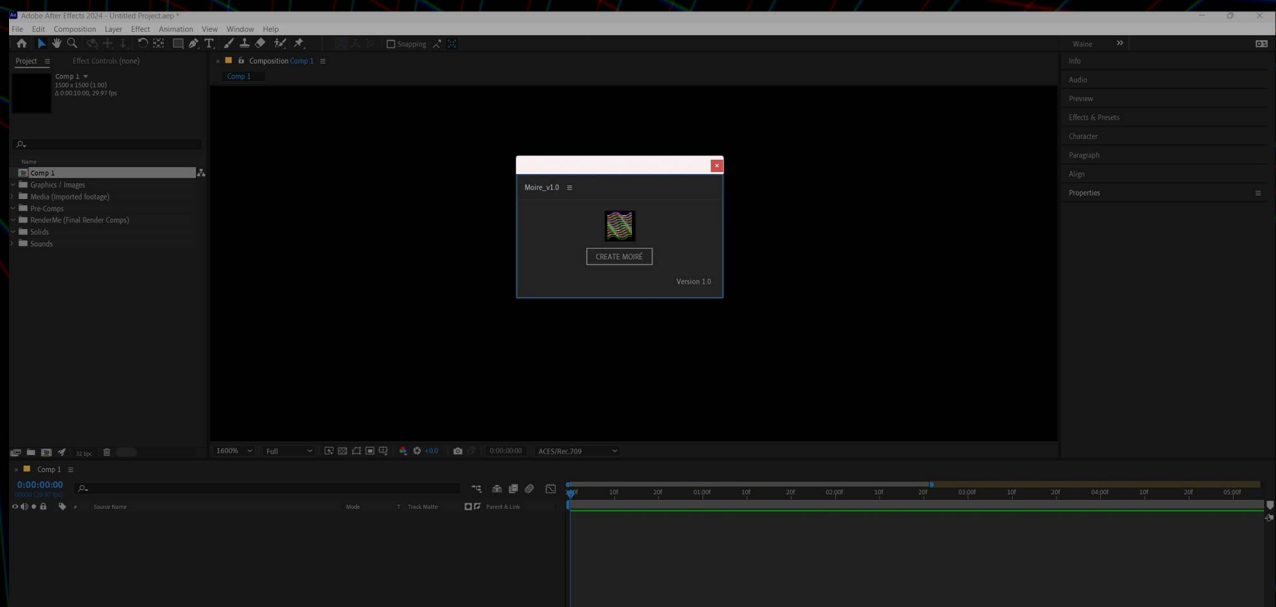
Click on Window.

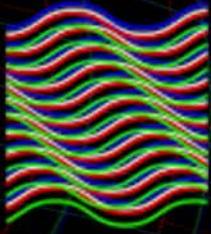
From the dropdown list, you should see the script you just installed. Click on it to load the script.



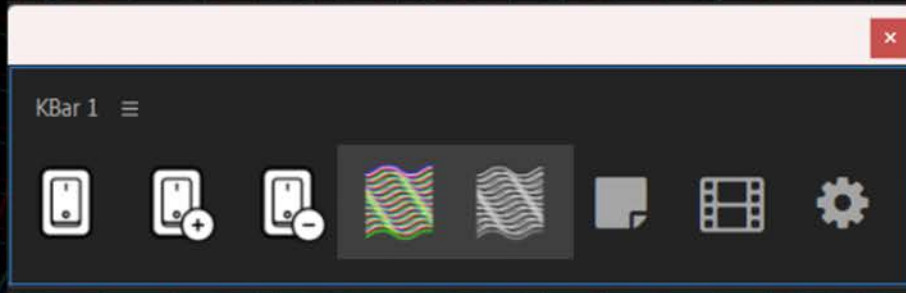
Step 6: Use the Script

Once loaded, the script's panel should appear within After Effects. Enter your serial key you've recieved in an email or on website you bought the script on. Now you can use the script!

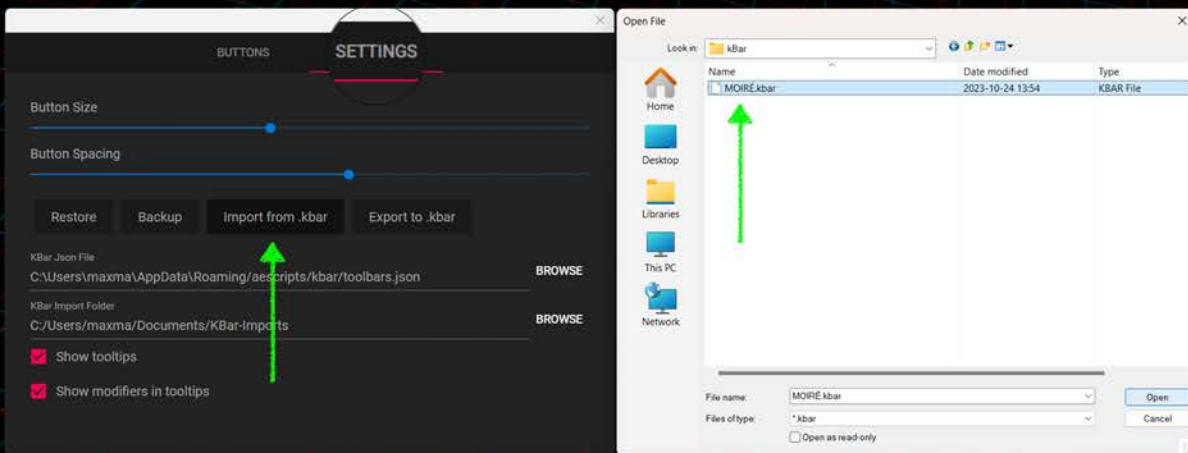




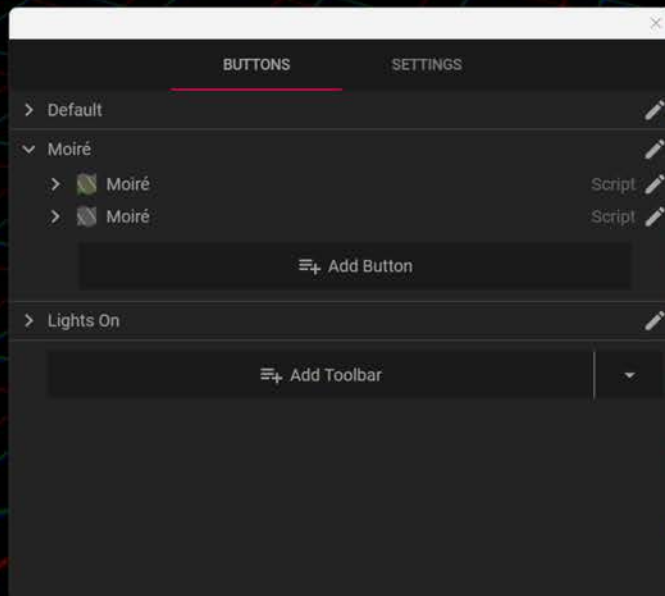
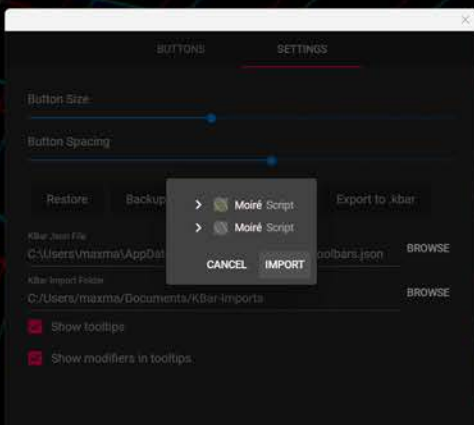
How to Install Moiré kBar Toolbar



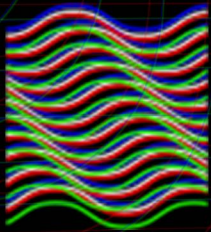
Open Settings in kBar.
Click on the button "Import from .kbar".
Choose your "Moiré.kbar" file in your unzipped "Moiré_v1.0" folder.
Click "Open".



A new window will appear.
Click "Import".
You're good to go!



For more information watch this kBar tutorial <https://vimeo.com/736751443>.



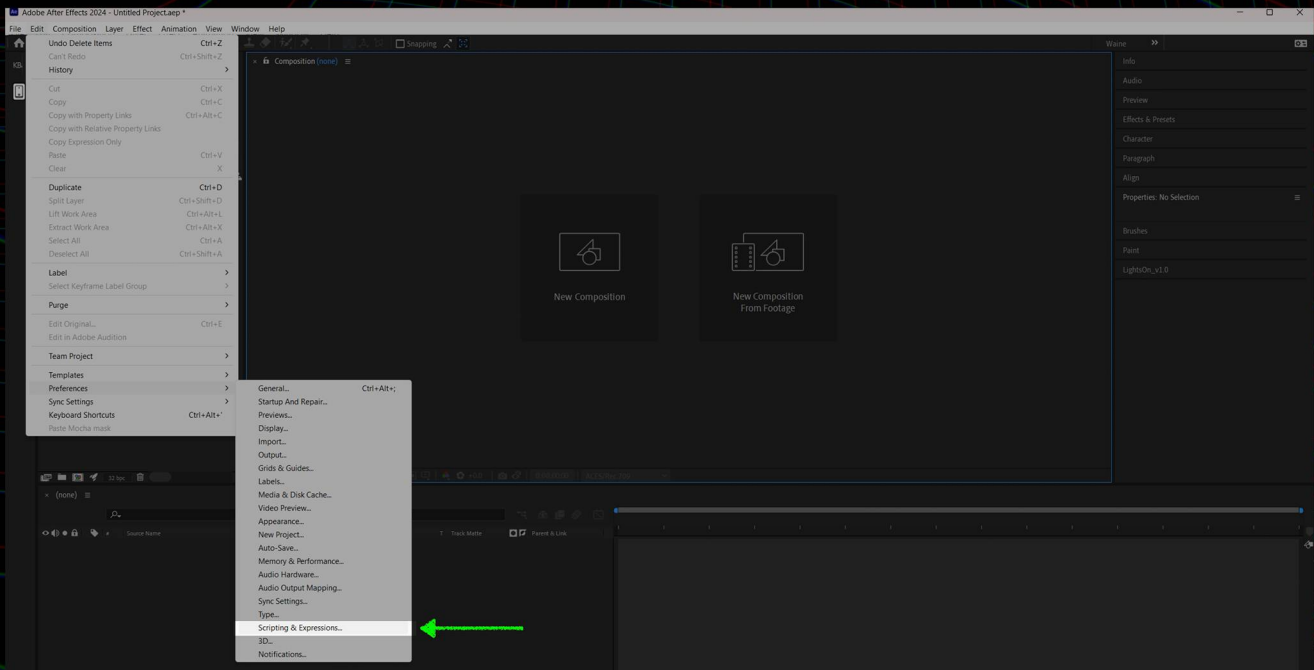
IF YOU ALREADY ARE USING SCRIPTS FOR AE THEN SKIP THIS PAGE!

Go to Preferences:

In After Effects, navigate to the 'Edit' menu if you're using Windows, or the 'After Effects' menu if you're on a Mac. From there, select 'Preferences'. This will open a submenu.

Select Scripting & Expressions:

In the Preferences submenu, choose 'Scripting & Expressions...!' to open the Scripting & Expressions dialog box.



Allow Scripts to Write Files and Access Network:

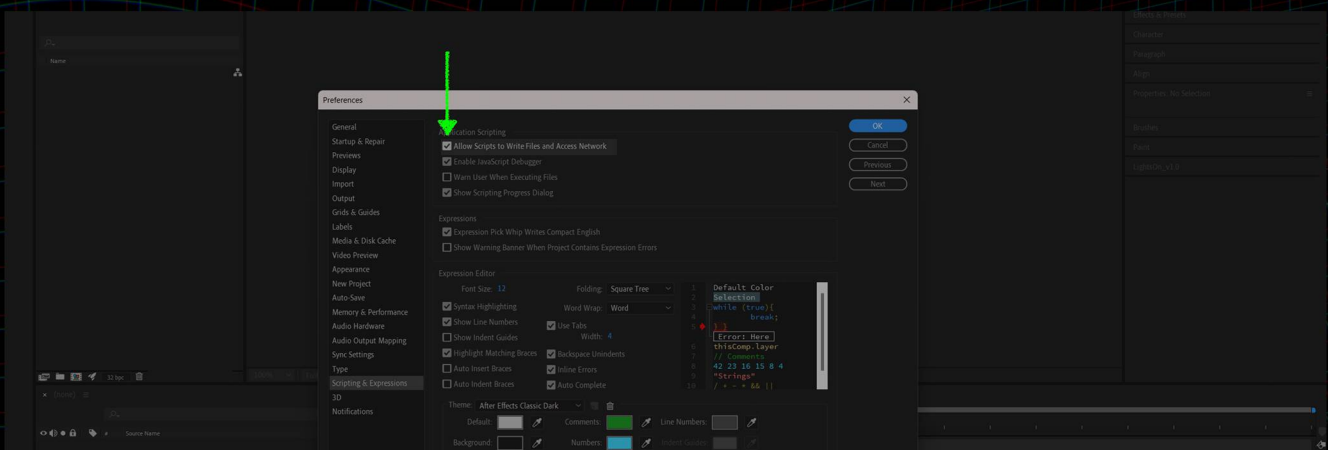
Within the Scripts & Expressions section, you should find a checkbox labeled "Allow Scripts to Write Files and Access Network". Click to check this box.

Save Preferences:

After checking the box, click 'OK' to close the Preferences dialog and save your changes.

Restart After Effects (optional):

It may be necessary to restart After Effects for the change to take effect. Close the program and open it again.



WFX

PART OF WAINE

scripts@waine.se
www.waine.se/aescripts