

Installation Guide

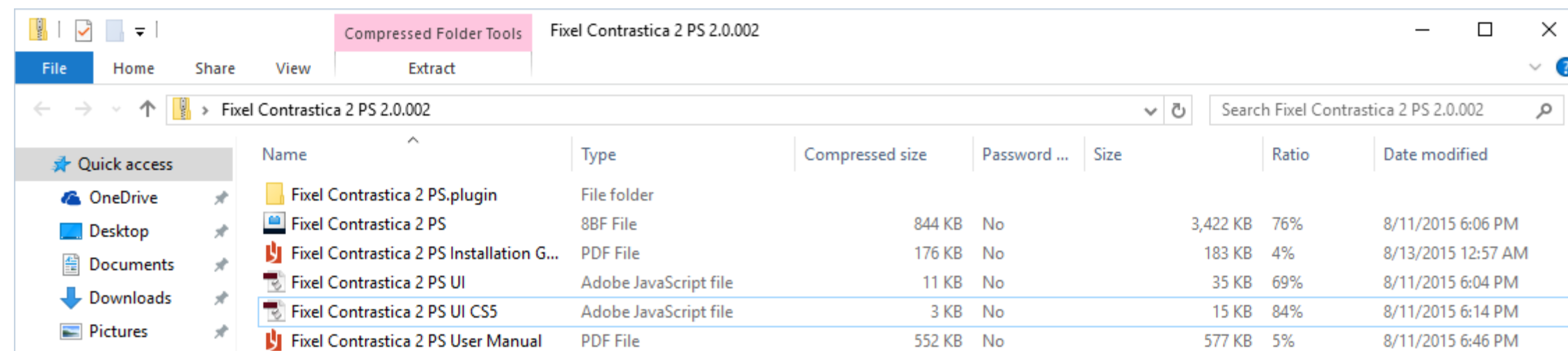
Fixel Contrastica 2 PS

Table of Content

- Package Contents
- System Requirements
- Installation
- Installation – Windows
- Installation – OS X
- Installation – Shared Folder
- Installation – Photoshop CS5
- Launching the User Interface
- Frequently Asked Questions

Package Contents

- Windows Plug In – ‘Fixel Contrastica 2 PS.8bf’.
- OS X Plug In – ‘Fixel Contrastica 2 PS.plugin’.
- Photoshop User Interface – ‘Fixel Contrastica 2 PS UI.jsx’.
- Photoshop CS5 User Interface – ‘Fixel Contrastica 2 PS UI CS5`.
- User Manual – ‘Fixel Contrastica 2 PS User Manual.pdf’.
- Installation Guide – ‘Fixel Contrastica 2 PS Installation Guide.pdf’.



System Requirements

- Operating System
 - Windows – Windows Vista 64 Bit, Windows 7 64 Bit, Windows 8 64 Bit, Windows 8.1 64 Bit, Windows 10 64 Bit.
 - OS X – OS X 10.7, OS 10.8, OS X 10.9, OS X 10.10.
- Adobe Photoshop
 - Adobe Photoshop CS6 64 Bit, Adobe Photoshop CC 64 Bit, Adobe Photoshop CC 2014 64 Bit, Adobe Photoshop CC 2015.
 - Adobe Photoshop CS5 64 Bit – Limited UI.
- CPU
 - Intel CPU with SSE 4.1 (Recommended).
 - AMD CPU with SSE 4.1.

Installation

- Adobe removed Adobe Extension Manager from its CC 2015 products.
- Many customers had issues with ZXP installation due to corrupted data base or other Adobe Extension Manager issues which forced them into manual installation.
- Since manual installation is simple and fool proof Fixel Algorithms chose it as the preferred installation method until independent in house made installer is ready.
- This Installation Guide will guide you through this simple procedure which is composed of copying 2 files.
- The installation mentions <Photoshop Version> where <Photoshop Version> can be "Adobe Photoshop CS6 (64 Bit)", "Adobe Photoshop CC (64 Bit)", "Adobe Photoshop CC 2014" or "Adobe Photoshop CC 2015".
- For any issue, please contact us at fixel@fixelalgorithms.com. We'll be glad to assist you with any issues.

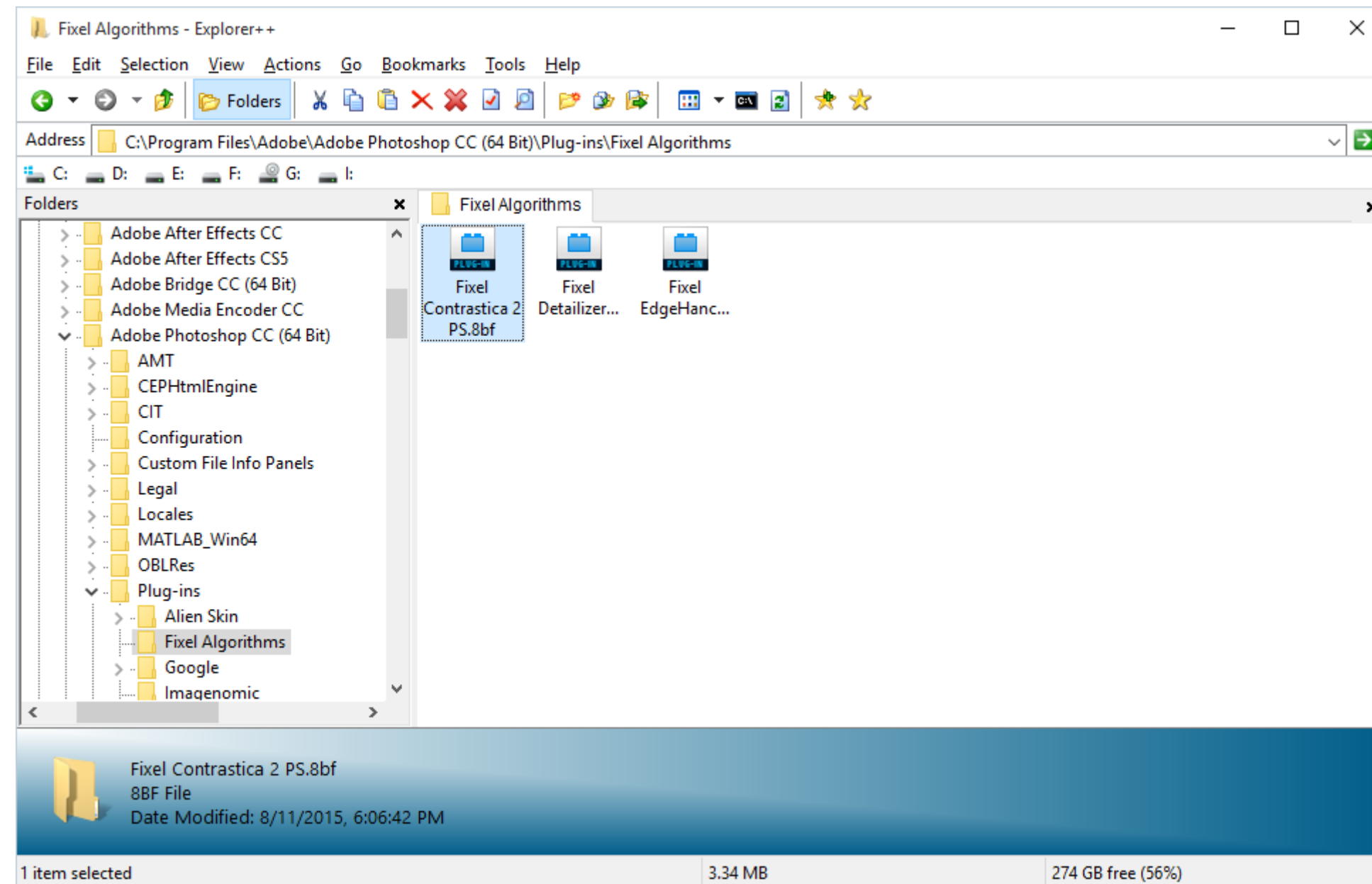
Installation – Windows 001

Plug In Installation

- Make sure Photoshop is closed.
- Go to the following path:
“C:\Program Files\Adobe\\Plug-ins”
- Create a Folder named “Fixel Algorithms”.
You may be required for Administrator Rights to do so.
- Go to the path created above:
“C:\Program Files\Adobe\\Plug-ins\Fixel Algorithms”
For instance, for the <Photoshop Version> Photoshop CC the path becomes:
“C:\Program Files\Adobe\Adobe Photoshop CC (64 Bit)\Plug-ins\Fixel Algorithms”
As can be seen in the screenshot in the next page.
- Copy the file “Fixel Contrastica 2 PS.8bf” into the folder above.

Installation – Windows 002

Fixel Contrastica Plug In copied into the Fixel Algorithms folder within Adobe Photoshop Plug Ins folder.



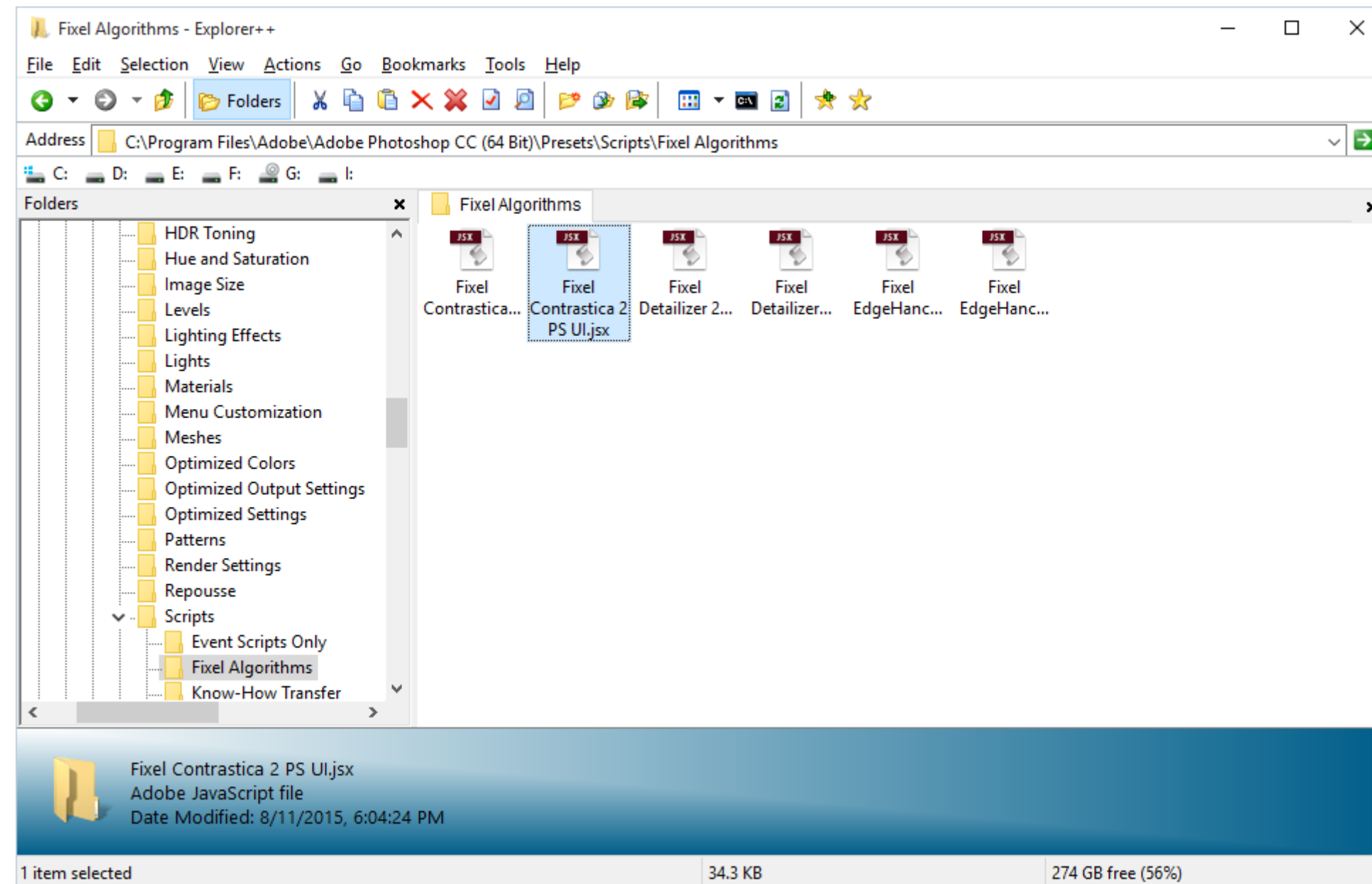
Installation – Windows 003

User Interface Installation

- Go to the following path:
“C:\Program Files\Adobe\\Presets\Scripts”
- Create a Folder named “Fixel Algorithms”.
You may be required for Administrator Rights to do so.
- Go to the path created above:
“C:\Program Files\Adobe\\Presets\Scripts\Fixel Algorithms”
For instance, for the <Photoshop Version> Photoshop CC the path becomes:
“C:\Program Files\Adobe\Adobe Photoshop CC (64 Bit)\ Presets\Scripts\Fixel Algorithms”
As can be seen in the screenshot in the next page.
- Copy the file “Fixel Contrastica 2 PS UI.jsx” into the folder above.

Installation – Windows 004

Fixel Contrastica User Interface copied into the Fixel Algorithms folder within Adobe Photoshop Scripts folder.



Installation – OS X 001

Plug In Installation

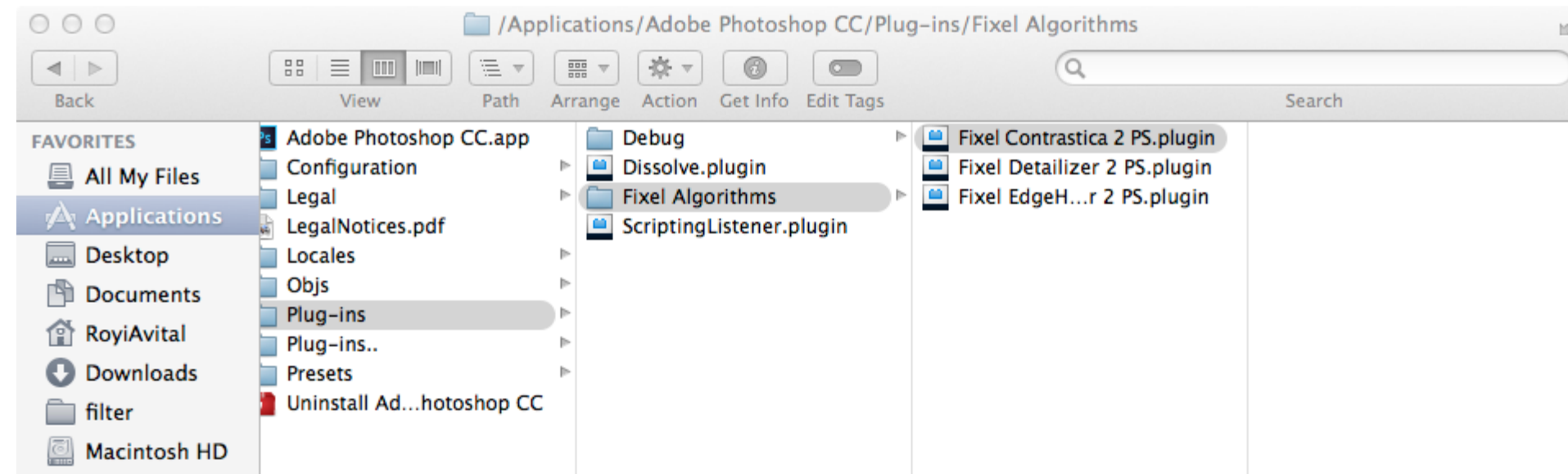
- Make sure Photoshop is closed.
- Go to the following path:
“Hard Drive/Applications/<Photoshop version>/Plug-ins”
- Create a Folder named “Fixel Algorithms”.
You may be required for Administrator Rights to do so.
- Go to the path created above:
“Hard Drive/Applications/<Photoshop version>/Plug-ins/Fixel Algorithms”
For instance, for the <Photoshop Version> Photoshop CC the path becomes:
“Hard Drive/Applications/Adobe Photoshop CC (64 Bit)/Plug-ins/Fixel Algorithms”
As can be seen in the screenshot in the next page.
- Copy the file “Fixel Contrastica 2 PS.plugin” into the folder above.

Installation – OS X 002

Fixel Contrastica Plug In copied into the Fixel Algorithms folder within Adobe Photoshop Plug Ins folder.

This screen shot presents the path:

“Hard Drive/Applications/Adobe Photoshop CC/Plug-ins/Fixel Algorithms”.



Installation – OS X 003

User Interface Installation

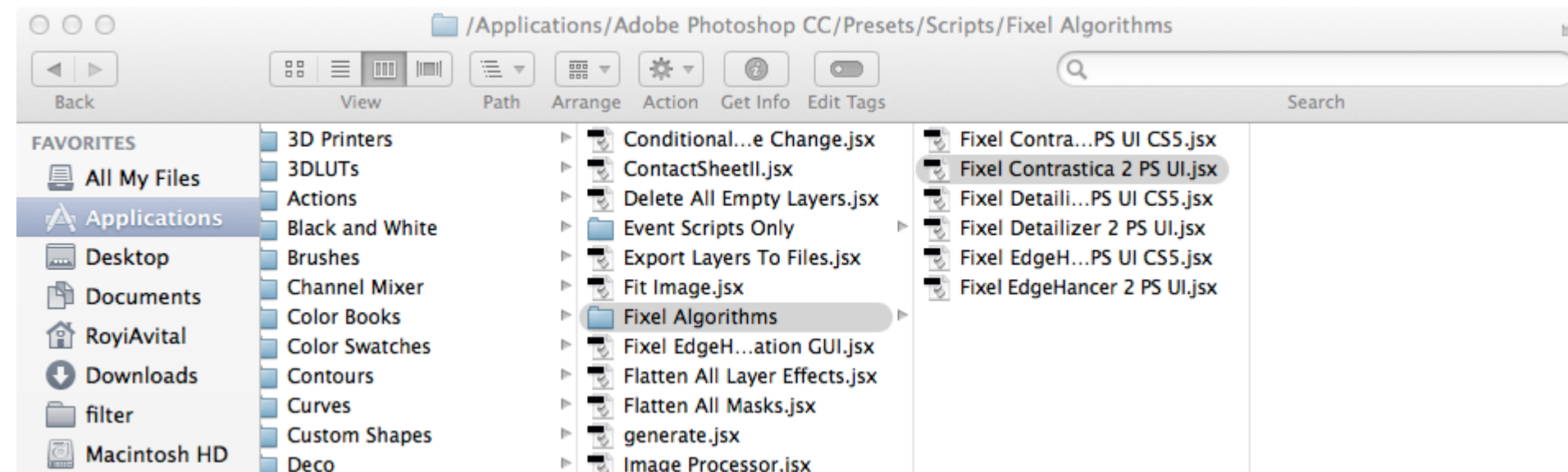
- Go to the following path:
“Hard Drive/Applications/<Photoshop version>/Presets/Scripts”
- Create a Folder named “Fixel Algorithms”.
You may be required for Administrator Rights to do so.
- Go to the path created above:
“Hard Drive/Applications/<Photoshop version>/Presets/Scripts/Fixel Algorithms”
For instance, for the <Photoshop Version> Photoshop CC the path becomes:
“Hard Drive/Applications/Adobe Photoshop CC (64 Bit)/Presets/Scripts/Fixel Algorithms”
As can be seen in the screenshot in the next page.
- Copy the file “Fixel Contrastica 2 PS UI.jsx” into the folder above.

Installation – OS X 004

Fixel Contrastica User Interface copied into the Fixel Algorithms folder within Adobe Photoshop Scripts folder.

This screen shot presents the path:

“Hard Drive/Applications/Adobe Photoshop CC/Presets/Scripts/Fixel Algorithms”.



Installation – Shared Folder

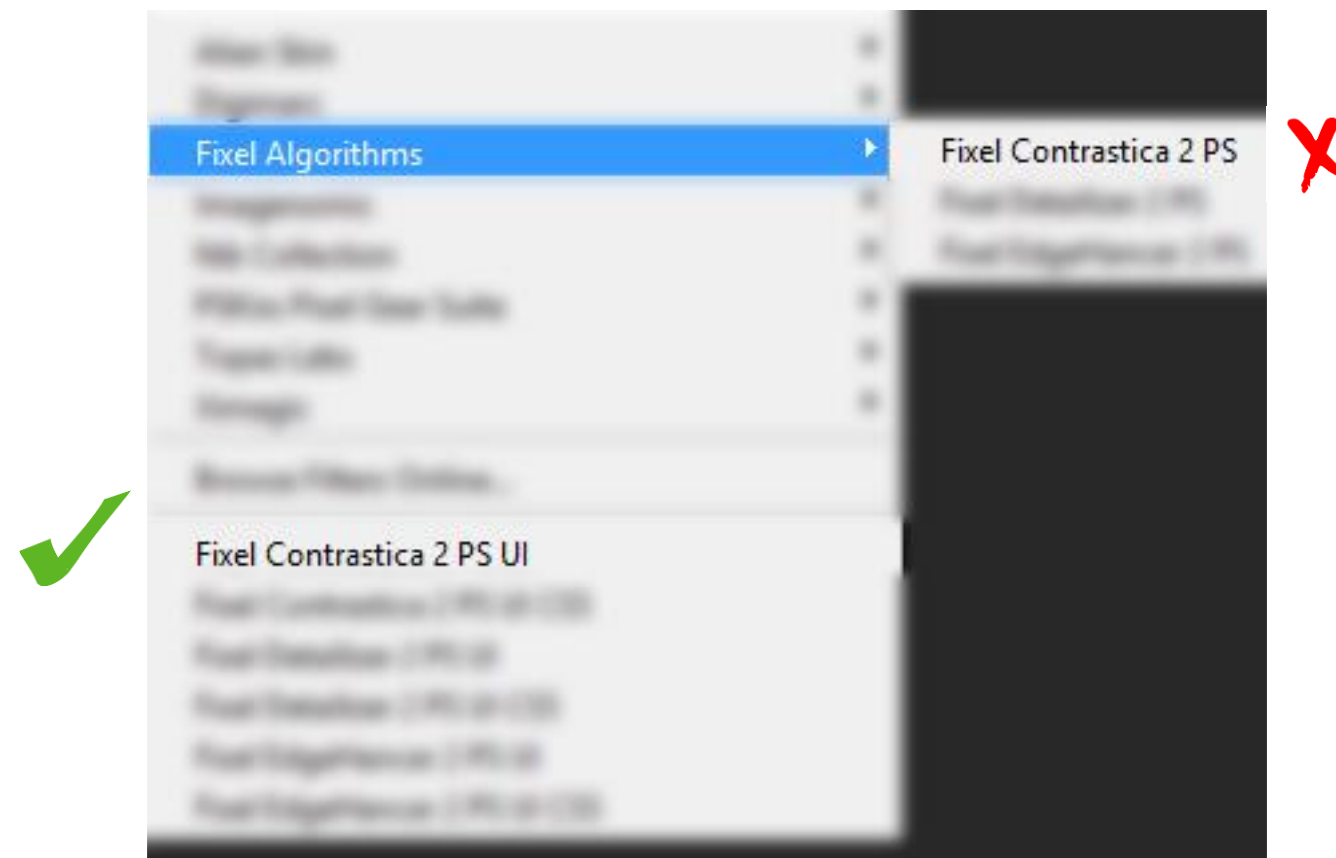
- Since the release of Adobe Photoshop CC Adobe created a Shared Plug In folder. All versions from CC and above supports this Plug In shared folder.
- From CC 2015.5 and onwards Plug In's must be located there.
- Users of CC (Not CS 6) version are advised to move the Plug In's into the Shared Folder.
 - Windows: “Hard Drive\Program Files\Common Files\Adobe\Plug-Ins\CC\Fixel Algorithms\”.
 - OS X: “Hard Drive/Library/Application Support/Adobe/Plug-Ins/CC/Fixel Algorithms/”.
 - Please create “Fixel Algorithms” folder if needed.
- For more information
 - [FAQ: Photoshop CC 2015.5 Now Available](#).
See “Important information about plug-ins”.
 - [Locate Plug In Folders](#).

Installation – Photoshop CS5

- Plug In Installation
 - Follow the installation above according to the OS.
 - Replace <Photoshop Version> by “Adobe Photoshop CS5 (64 Bit)”.
- User Interface Installation
 - Follow the instruction on how to install the User Interface on Windows / OS X.
 - Use “Fixel Contrastica 2 PS UI CS5.jsx” instead of “Fixel Contrastica 2 PS UI.jsx”.
 - Replace <Photoshop Version> by “Adobe Photoshop CS5 (64 Bit)”.
- Launching the Plug In User Interface
 - To launch the simplified UI click on “Filter -> Fixel Contrastica 2 PS UI CS5”.
- Though the UI is simplified, the functionality and results on CS5 are the identical to any other version.

Launching the Plug In User Interface

- Open Photoshop.
- Open The Filter Menu.
- At the Bottom, locate “**Fixel Contrastica 2 PS UI**” and click it.
Do Not Click “Fixel Algorithm -> **Fixel Contrastica 2 PS**”.
 As this will not launch the UI.



Frequently Asked Questions 001

- I click on Fixel Contrastica 2 PS and nothing happens, why?
Please click on “Filter -> Fixel Contrastica 2 PS UI” to launch the GUI.
- I can't find Fixel Contrastica 2 PS UI, what should I do?
Please make sure you installed the UI at the correct place.
- How can I know my Contrastica Plug In version?
Launch the UI, click on the Question Mark “?” button.
- I need support, what information should I give you?
OS Version, Photoshop Version, CPU Model, Screenshot of the Plug In's folder of Photoshop and the content of Fixel Algorithms folder, Screenshot of the Scripts folder of Photoshop and the content of the Fixel Algorithms folder and a screenshot of the Filter Menu within Photoshop.
Send all to fixel@fixelalgorithms.com.