

fixelalgorithmsfixelalgorithms
fixelalgorithmsfixelalgorithms
fixelalgorithmsfixelalgorithms
fixelalgorithmsfixelalgorithms
fixelalgorithmsfixelalgorithms
fixelalgorithmsfixelalgorithms
fixelalgorithmsfixelalgorithms

zone selector

Luminosity Masks in the Zone



Overview

Fixel Detailizer 2 PS is a **Luminosity Mask Generator**.

Zone Selector features 11 different Tonal Zones, to **completely control the** tonal range of the Luminosity Mask. Detailizer benefits from **innovative algorithm**.

Using *Zone Selector*, **controlling the Tonal Range of the Luminosity Mask** is just done in [Ansel Adam's Zone System](#) Style using easy and intuitive UI.

Fixel Zone Selector 2 PS is **Multi CPU accelerated** and compatible with CPU's with **SSE4** and Up.

0011
0110

Novel algorithm

PS

Adobe Photoshop
CS6 & CC compatible

Multi
CPU

Multi CPU
accelerated

SSE4

Modern CPU
Optimized code

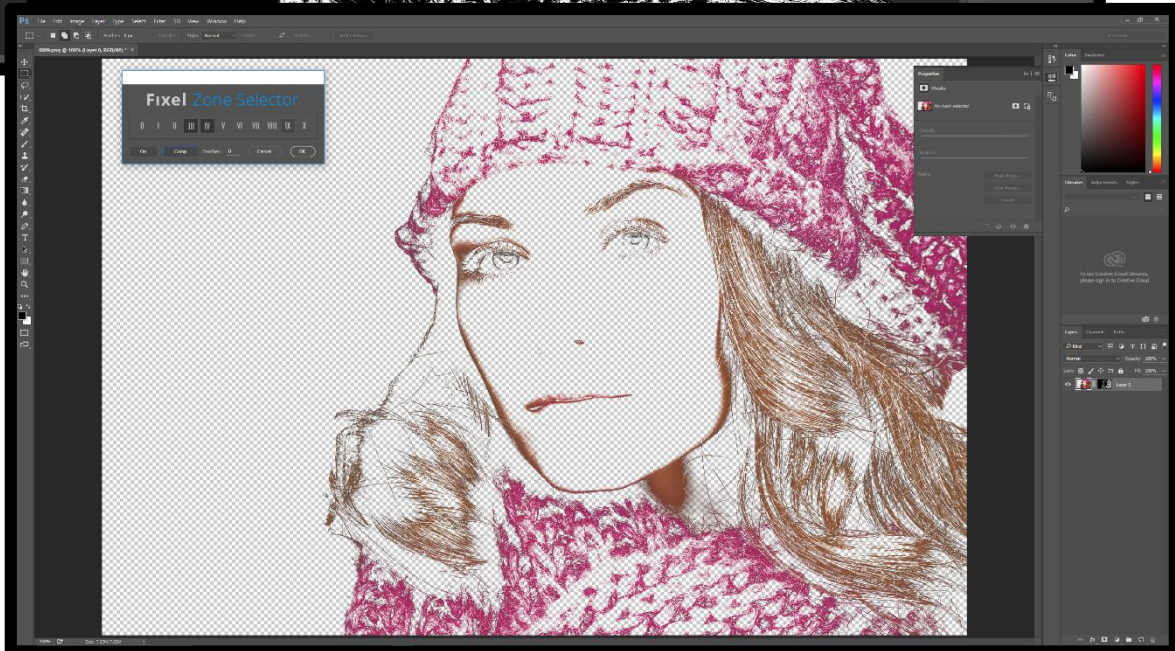
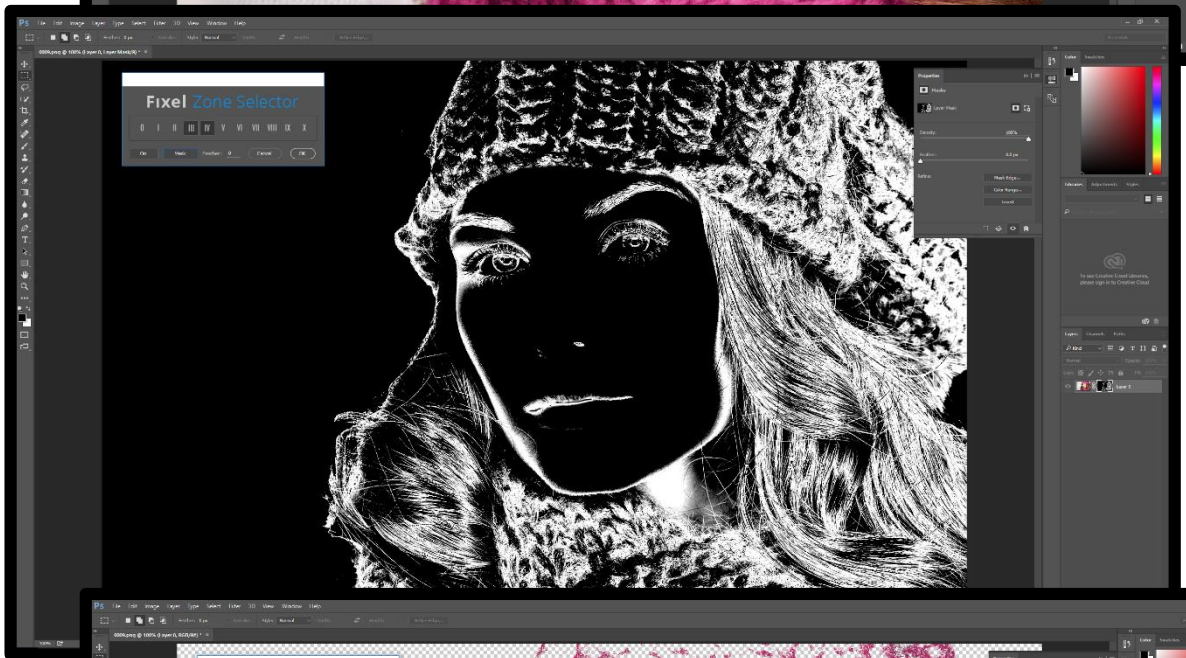
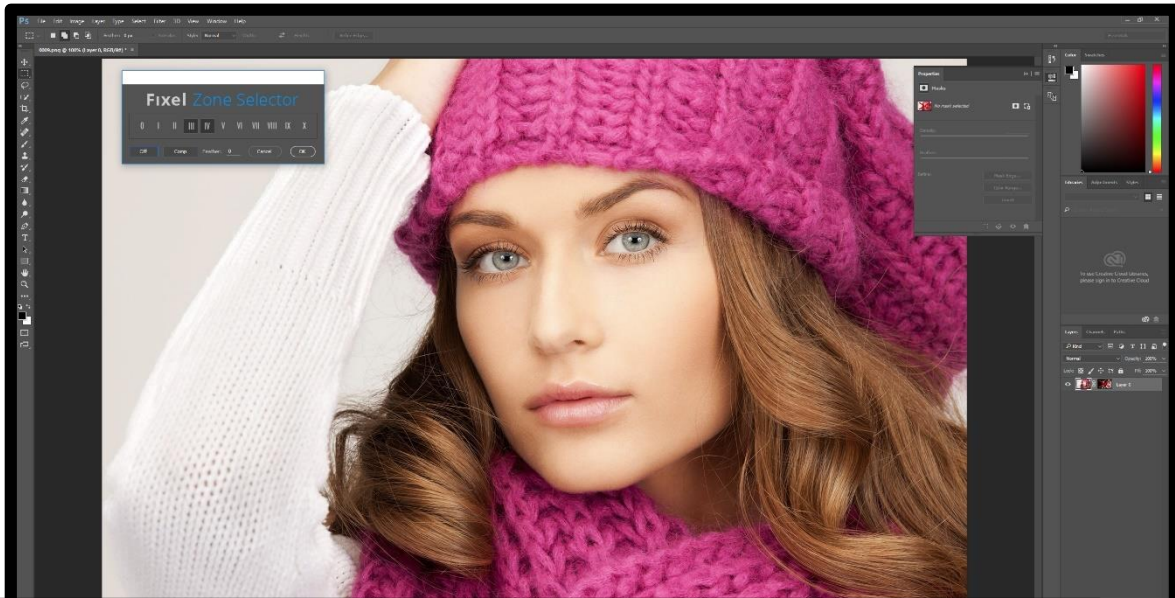
32bit

32 Bit color depth
internal processing

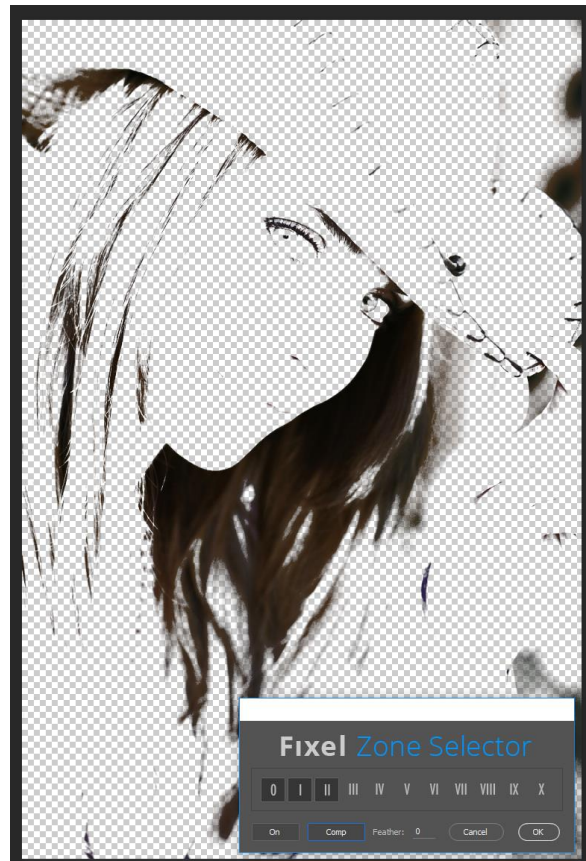
64bit

64 Bit compatible

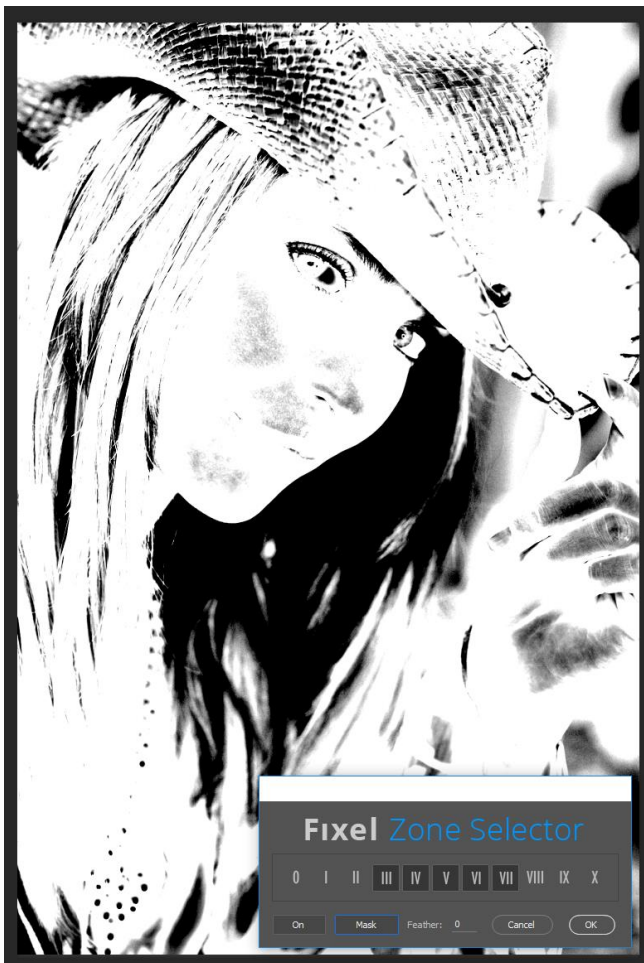
Showcase



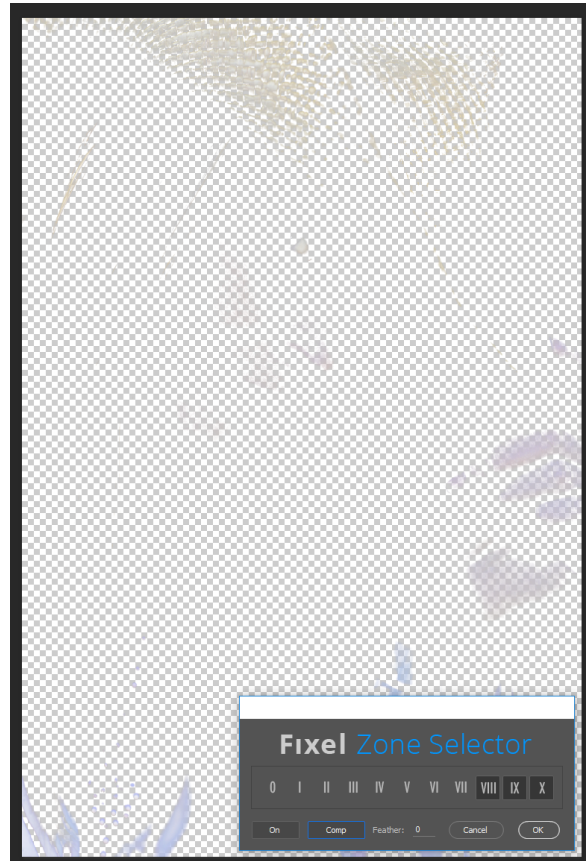
Showcase - Shadow



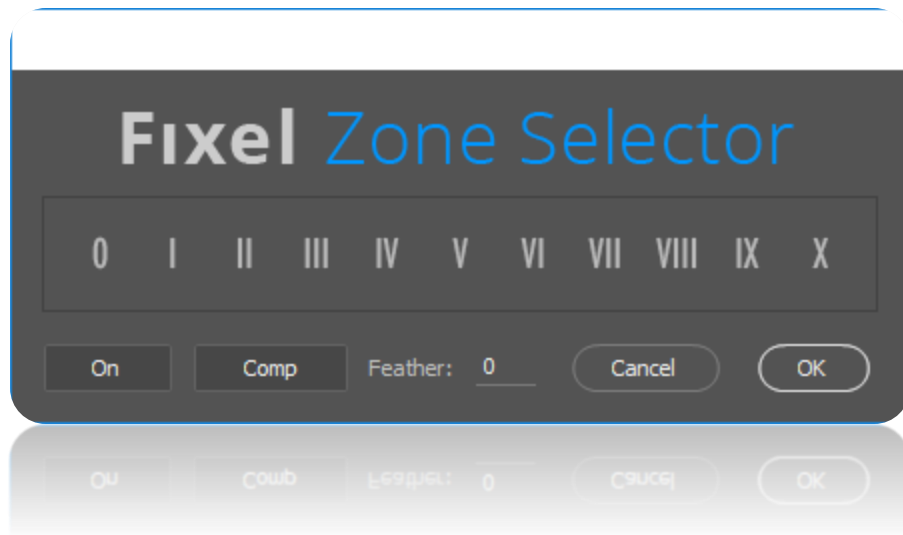
Showcase - Midtone



Showcase - Highlight



Panel & Sliders (PS)



- + **Zone Selectors** Sets whether this selected Tonal Zone is enabled / disabled in the Luminosity Mask
- + **On / Off** Enable / Disable the Mask
- + **Comp / Mask** Toggles between viewing the mask or the composition of the layer
- + **Feather** Sets the Feathering Level of the Mask
- + **Cancel** Cancels the effect and closes the panel
- + **OK** Applies the effect and closes the panel

Thank You !

Thank you for buying Fixel Algorithm's product.
We are doing our best efforts to deliver innovative, intuitive and useful products for our customers.

We invite you to visit [Fixel Algorithms](#).

If you have questions / feedback / complaints / suggestions on our product, please contact us –
fixel@fixelalgorithms.com