

Paint Link

Paint Link offers a revolutionary new workflow for frame-by-frame animation. Create a dynamic connection between After Effects and Photoshop to unlock the best of both tools. aescripts.com/paint-link

This tool consists of an After Effects plugin, and a Photoshop Plugin. The After Effects plugin is applied to a layer in After Effects, and each keyframe created will link to and render a PSD. Upon creation of a keyframe/PSD, the plugin will open it in Photoshop, so you're able to paint on it, and see those results rendered back in After Effects. The Photoshop plugin is a button panel which will allow you to change frames in your timeline without leaving Photoshop.

Installation and Very Important Setup

The easiest way to install and license the plugin is using the aescripts manager app:
<https://aescripts.com/learn/aescripts-aeplugins-manager-app/>

Trial:

If you are using the trial version, you can install it using the manager by selecting '**Add Trial**' from the '**Account**' menu and search for **Paint Link** then click '**Add**' then '**Install**'

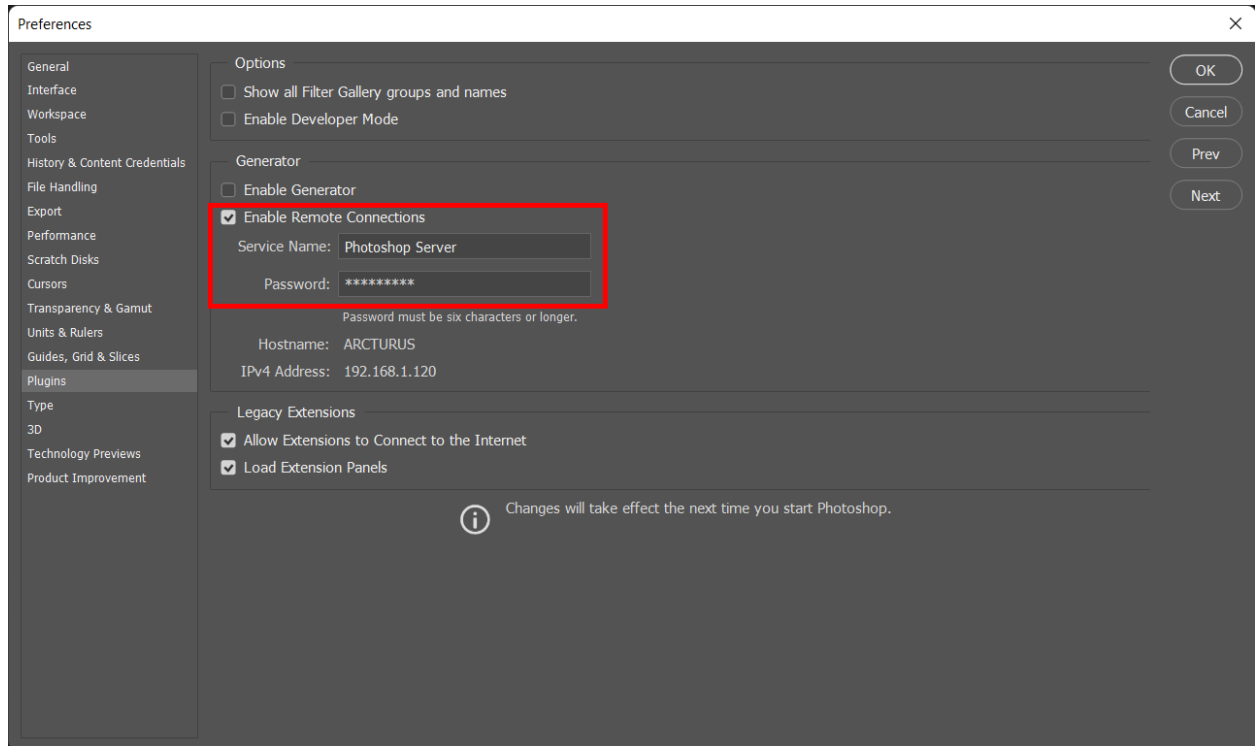
Manual Installation:

It is not recommended to try to install this plugin manually, but to install manually, quit both After Effects and Photoshop. Copy the 'Paint Link' folder for your operating system into the After Effects plugins folder and double click the .ccx file inside the Photoshop Panel folder.

Once installed, **there are a few very important changes that need to be made in Photoshop to allow Photoshop and After Effects to communicate**. See the next sections for details.

Configure the Photoshop Server

After launching Photoshop, select **Edit** from the main menu and then choose **Remote Connections**. The following dialog will appear:



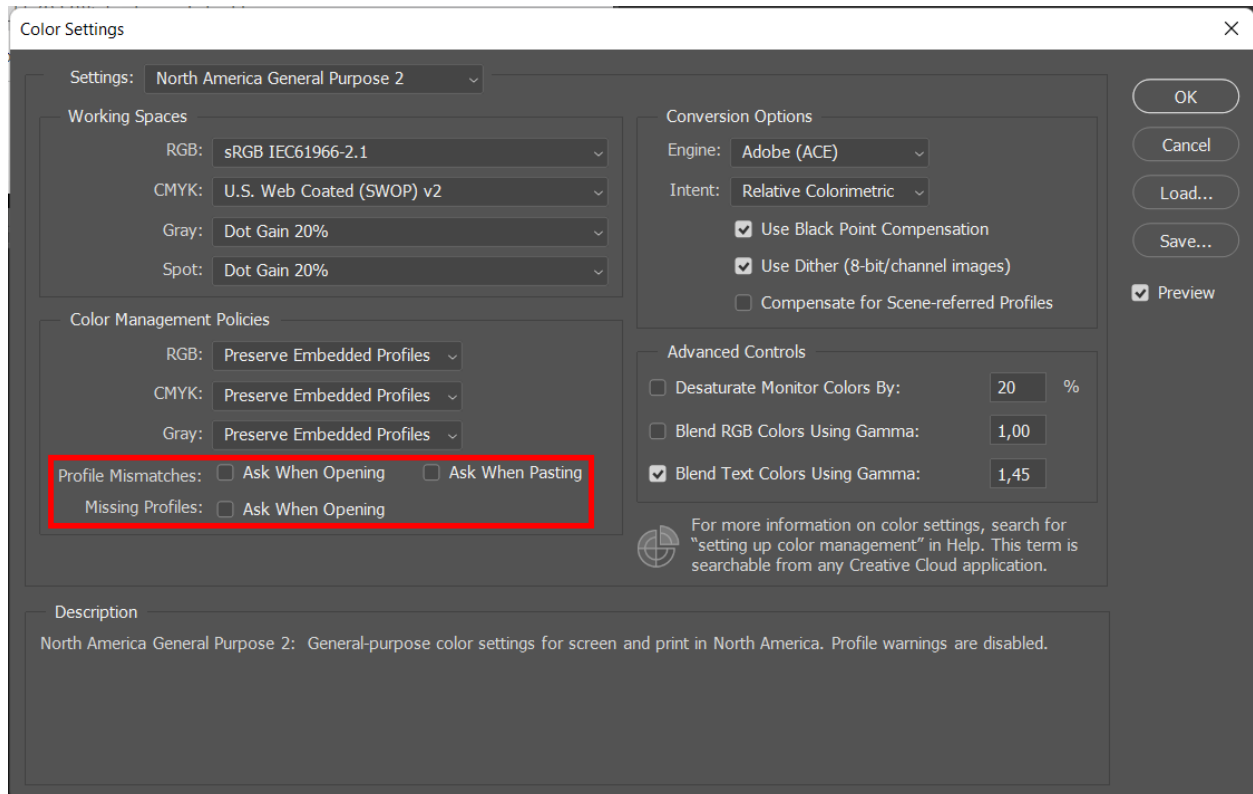
Configure the dialog:

- Check the **Enable Remote Connections** checkbox.
- **Service Name:** Leave it unchanged, defaults to Photoshop Server
- **Password:** aescripts

Then click OK to close the dialog.

Remove Missing Profile Messages

Select **Edit** from the main menu and then choose **Color Settings**. The following dialog will appear:



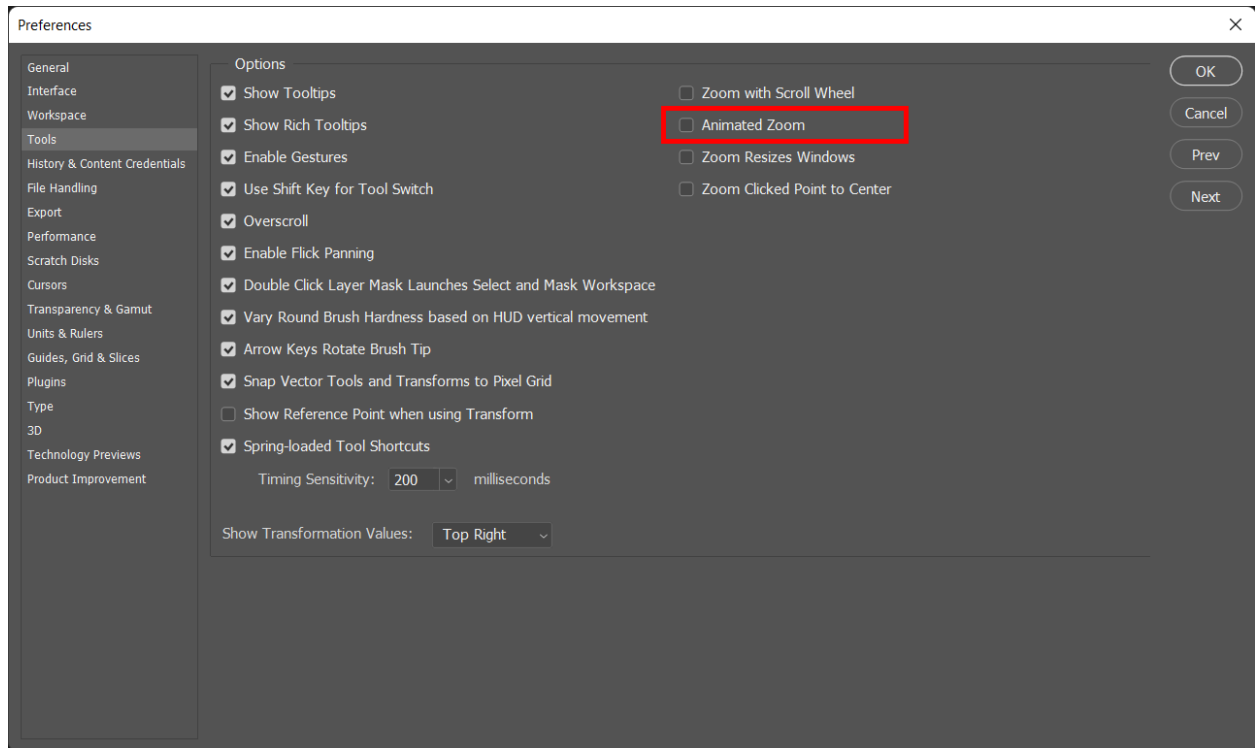
Configure the dialog:

- Uncheck both **Profile Mismatches: Ask When Opening** and **Ask When Pasting** checkboxes.
- Uncheck the **Missing Profiles: Ask When Opening** checkbox.

Then click OK to dismiss the dialog.

Disable the Animated Zoom

Select **Edit** from the main menu and then choose **Preferences >> Tools**. The following dialog will appear:



Configure the dialog:

- Uncheck the **Animated Zoom** checkbox.

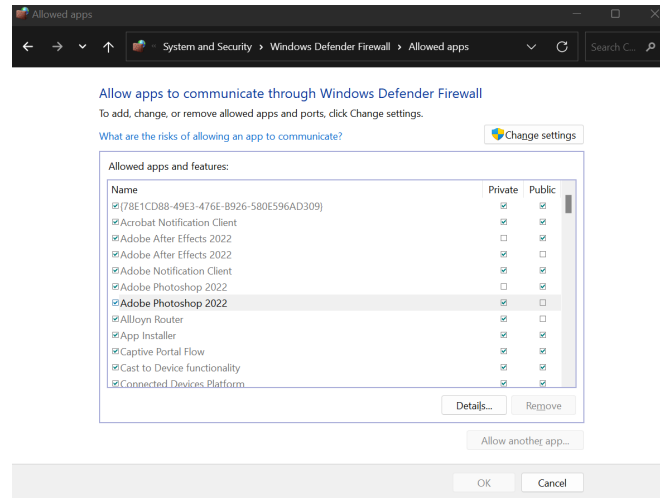
Then click OK to dismiss the dialog.

Troubleshooting the Windows Firewall

At this point, Paint Link should work, and you should be done. But some users who had previously configured their Firewall may have configured it to deny Photoshop remote connections. If Paint Link isn't working and you've followed all the steps above, please clear your Firewall settings.

To clear your Firewall settings on Photoshop, go to:

Control Panel\System and Security\Windows Defender Firewall\Allowed apps



You can remove any instances of Photoshop from this list, then restart Photoshop. The next time you open Photoshop, there should be a popup, in which you can “Allow Access” through the firewall.

