

0. Setup:

- The easiest way to install is by using the aescrpts + aeplugins manager

<https://aescrpts.com/learn/aescrpts-aeplugins-manager-app/>

- You can also install using the zxp installer.

<https://aescrpts.com/learn/zxp-installer/>

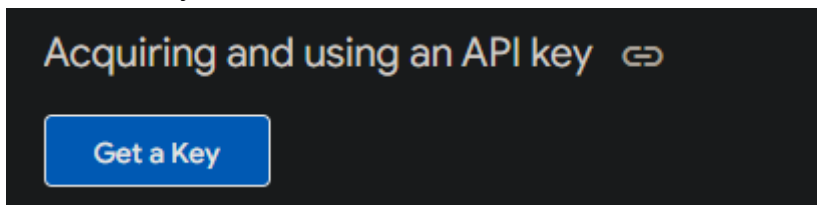
- In After Effects, enable 'Allow Scripts to Write Files and Access Network' in **Edit > Preferences > Scripting and Expressions**

1. Configuration:

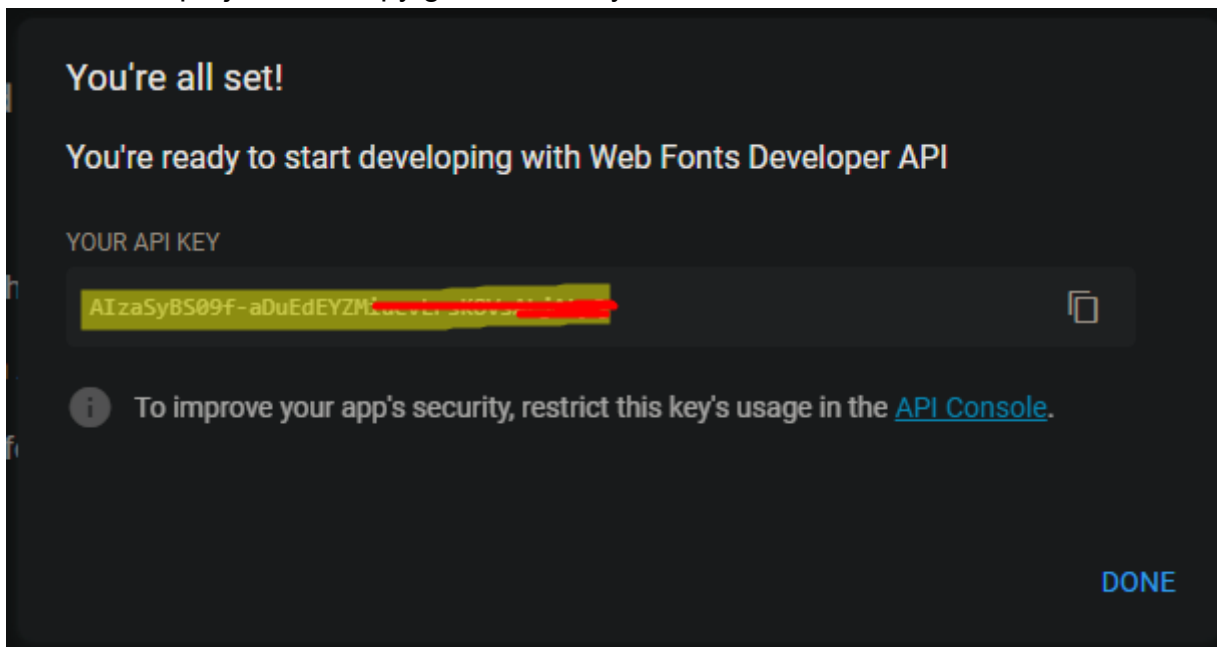
1.1 Go to Window > Extensions > FontShaper

1.2 GoogleApi:

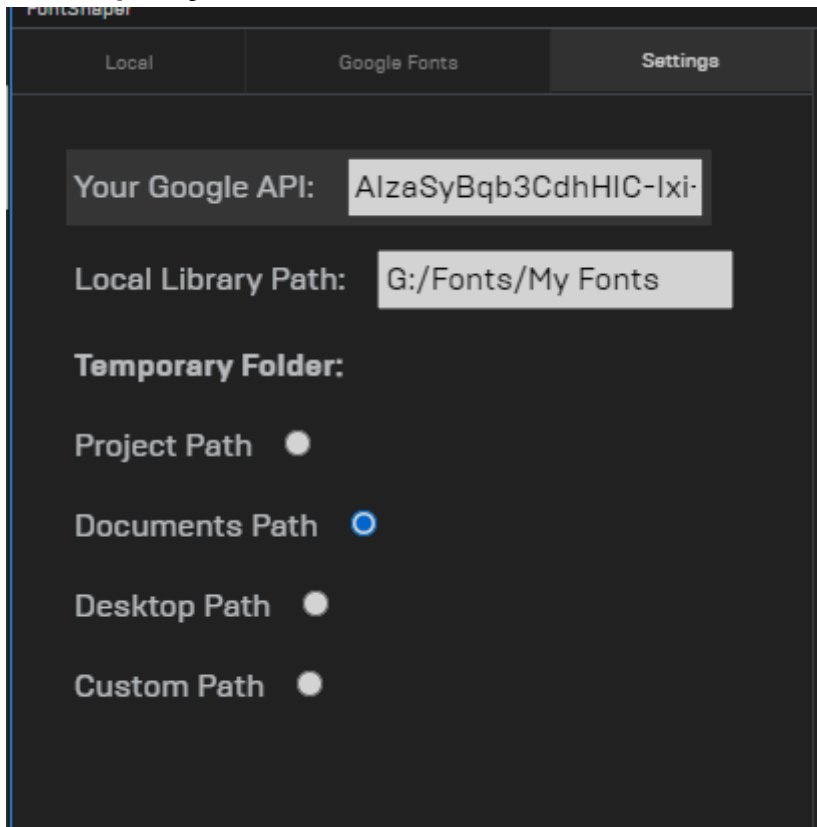
1. Go to: https://developers.google.com/fonts/docs/developer_api#APIKey.
2. Click Get key:



3. Create new project and copy generated key.



4. Paste **api key** and restart extension:

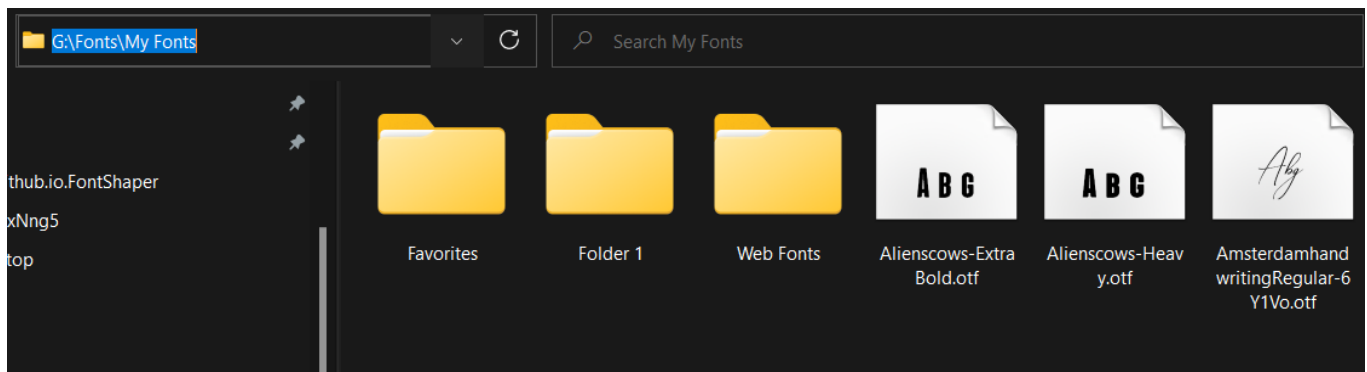


1.3 Local Library:

- Paste your local folder path into 'Local Library Path'.

! **Make sure to use "/"**

! **Extension support Folders only 1 level deep.** Don't create nested folders.



1.4 Temporary Path:

Select preferable path for files export.

For custom path, provide path with "/" (ex. C:/Shapes)

Restart extension.

3. Known issues:

3.1 Unsupported fonts:

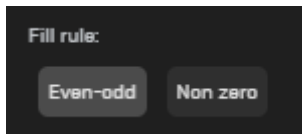
Formats: woff2, eot, svg

Extremely detailed fonts

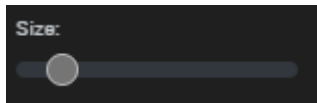
3.2 Fix holes/overlapping:



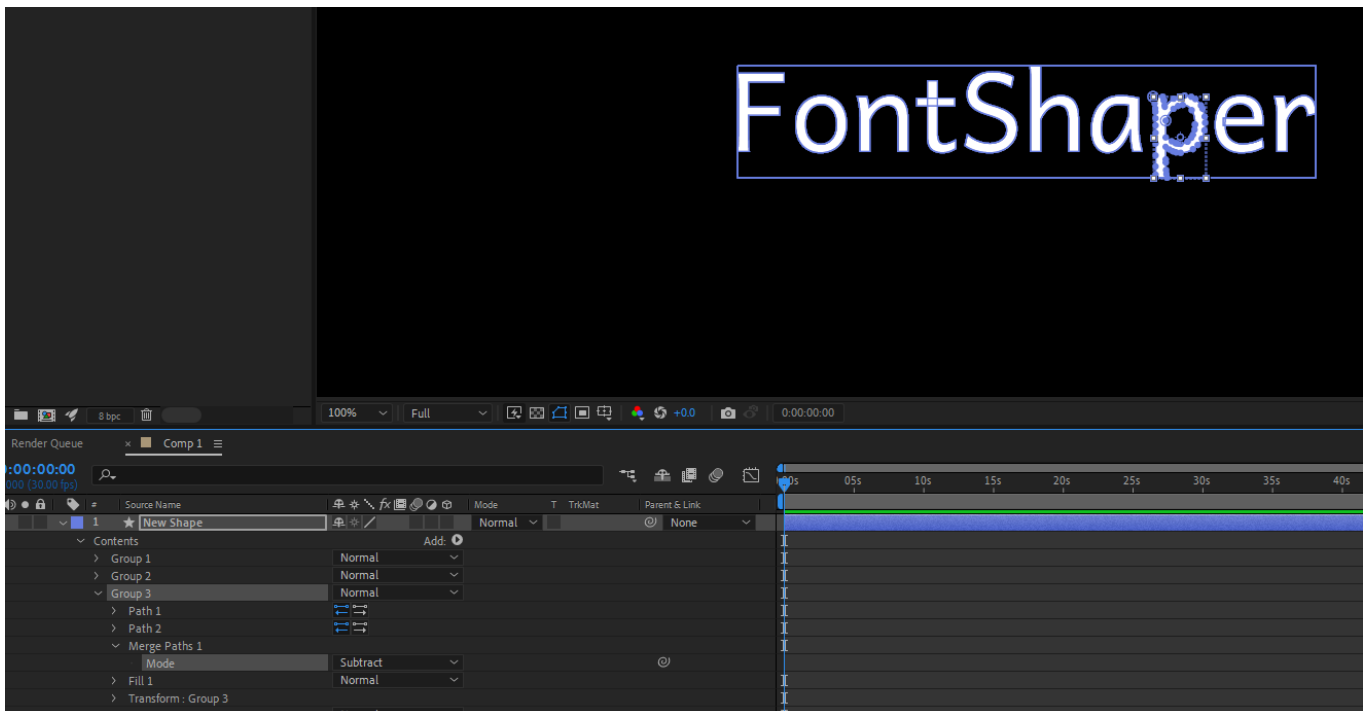
- Change fill rule.



- Change size. Certain sizes have no holes.



- Remove manually. Change hole path mode to **subtract**.



4. Paths for Photoshop

If you want to work in **Photoshop** with font paths check out our tool: UniPort on aescripts.com.

5. Version

Made using CEP9. Requires CC 2018+ version of After Effects (15+).

Apple Silicon Machines must run Photoshop under Rosetta Mode

6. Support:

Use this thread to ask all questions related to this extension.

https://aescrpts.com/contact/?direct=1&product_id=2362