

# Photoshop Vector Importer

## Vector: Simply Drag and Drop!

### Setup:

- The easiest way to install is by using the aescrpts + aeplugins manager

<https://aescrpts.com/learn/aescrpts-aeplugins-manager-app/>

- You can also install using the zxp installer.

<https://aescrpts.com/learn/zxp-installer/>

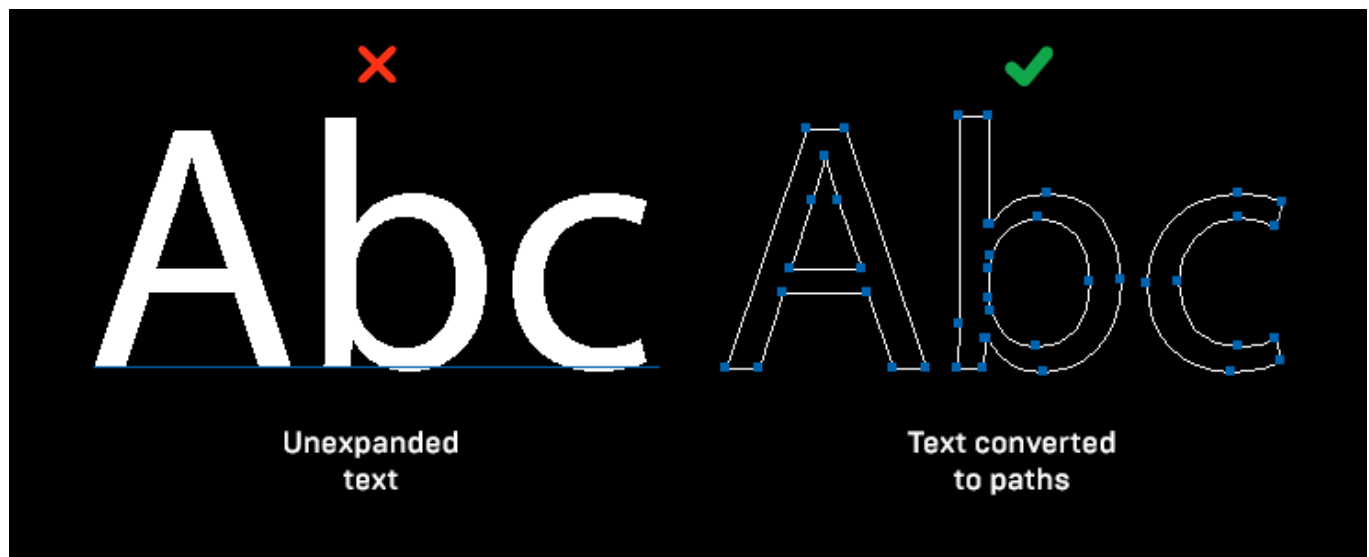
### Limitations:

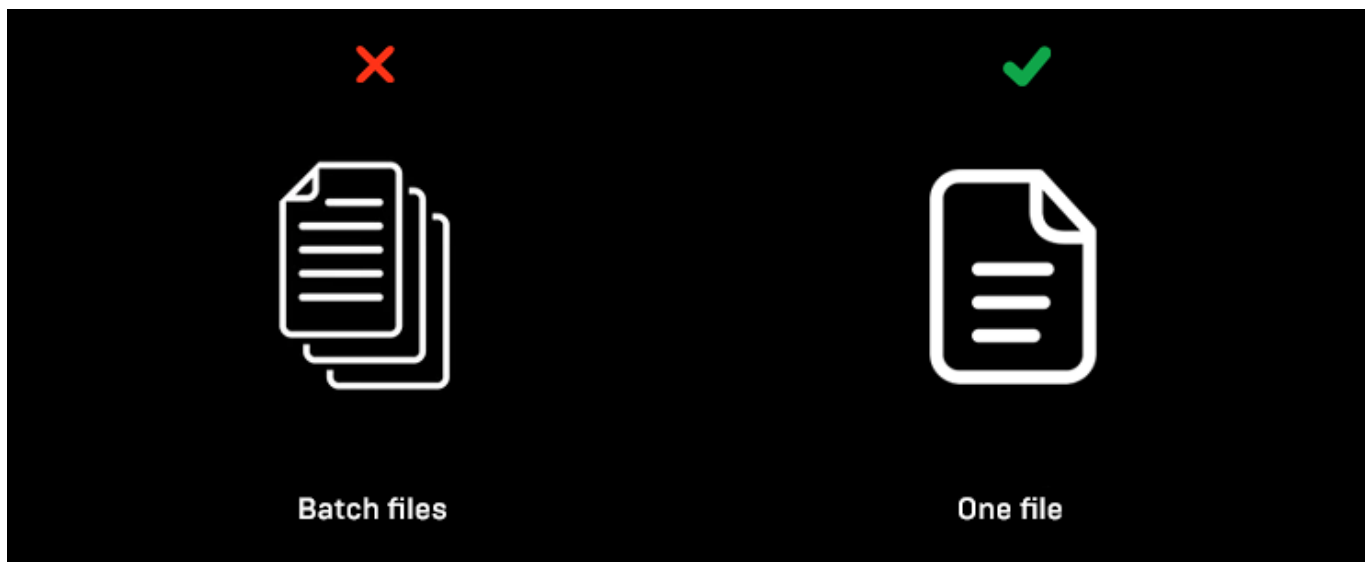
**Extension requires ability to write files and access to internet.**

- Use only **Shape** graphics with closed paths.
- Extension **doesn't support mesh gradients, patterns or unexpanded** fonts.

*Unexpanded = not converted to paths.*

*To convert them in **Illustrator**, select text and go **Object > Expand**.*





- No **batch files** support.

## Supported Formats:

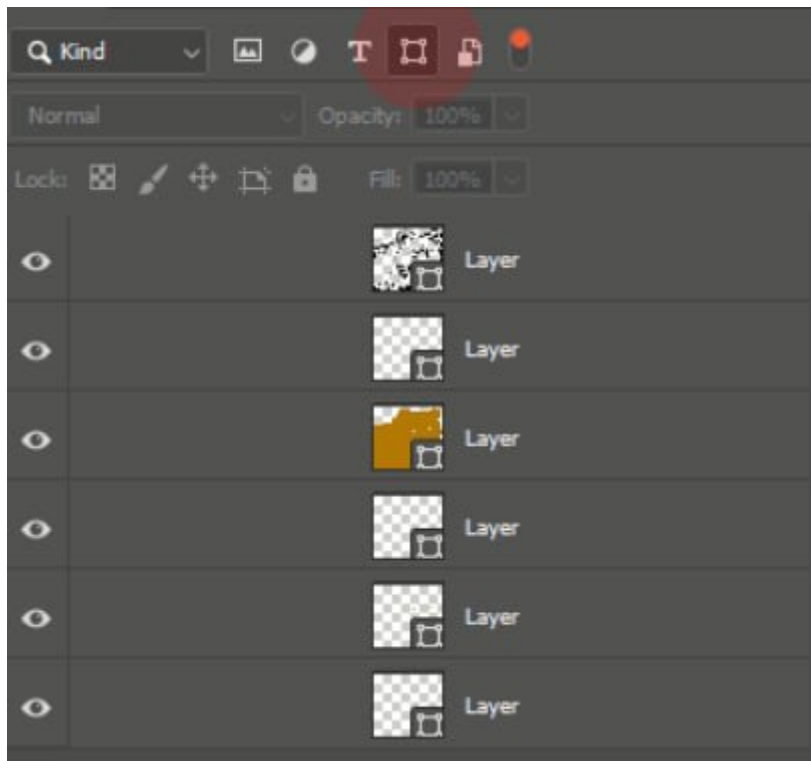
Adobe Illustrator (AI,EPS,SVG)

CoreIDRAW (CDR)

## Usage:

- Go **Window > Extensions > UniPort**
- Drag and drop your file inside or click on **UniPort** extension **window**.
- Your file will be **imported** or **opened** as **PSD** file.

## Folders clutter:



- Use layers filter (shapes) to ignore folders.

## Settings:

### Place Embedded

Tick if you want to place your file inside opened project.

### File location:

Select preferable path for pasted **PSD** files. Ensure that **Custom Path** uses forward slashes "/".

## Version

Made using CEP8. Requires CC 2018+ version of After Effects (15+).

## Apple Silicon Machines must run Photoshop under Rosetta Mode

## Support:

Use this thread to ask all questions related to this extension.

[https://aescrpts.com/contact/?direct=1&product\\_id=2374](https://aescrpts.com/contact/?direct=1&product_id=2374)