

Parameter

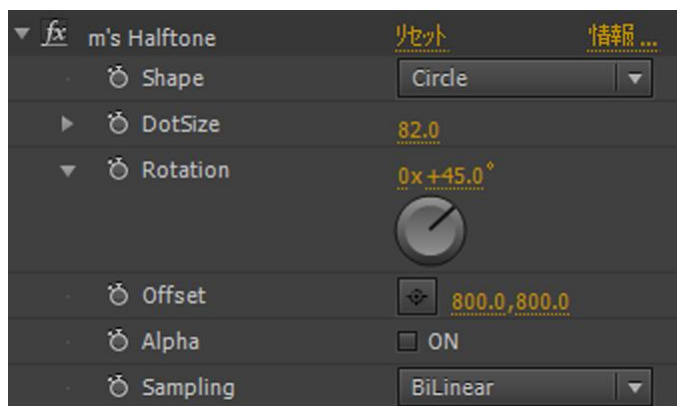


Fig1. Effect Window

Shape

You can select the shape of halftone. There are three types of shapes, circle, square, line.

DotSize

You can adjust the maximum size of halftone and the size of the interval.

Rotation

You can adjust the alignment angle of halftones.

Offset

You can adjust the starting position of the halftone.

Alpha

You can adjust the maximum size of the halftone and the size of the interval.

Sampling

You can choose how to calculate the halftone size. Two types of BiLiner and Nearest can be selected. When adjusting Offset, BiLiner changes gently and Nearest changes steeply. For normal use, BiLiner is recommended.

Recommended usage

You can adjust the overall size of halftone with the DotSize parameter, but fine adjustment between tones is easier to adjust by Curves effect preprocessing than m's Halftone.

It is also good to color tones with the CC Toner effect and Fill effects with m's Halftone post-processing.

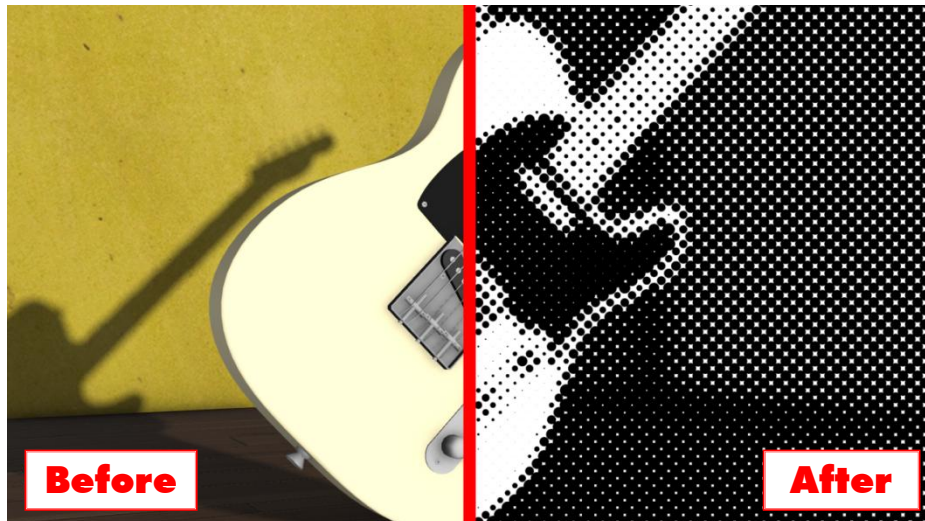


Fig2. Example of m's Halftone effect only processing

Halftone processing is applied according to the luminance value of the layer.

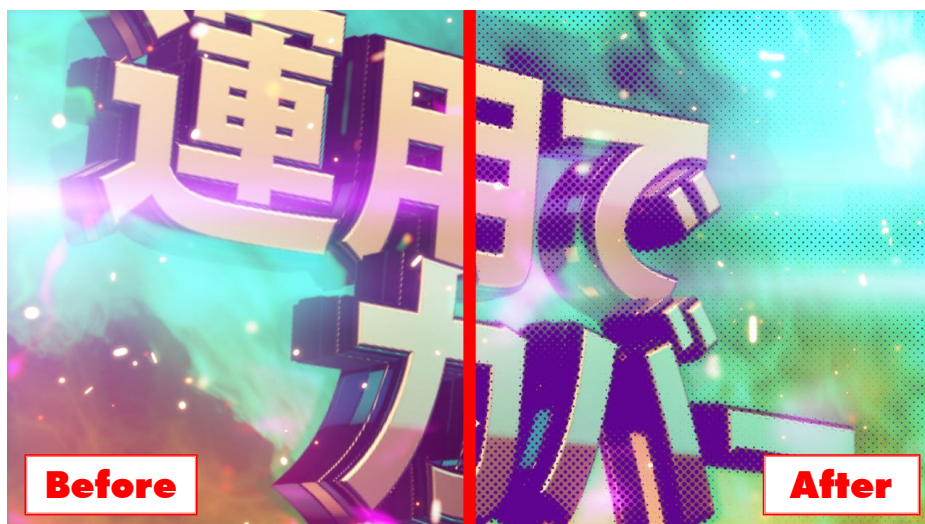


Fig3. Example of a combination of m's Halftone effect and standard effect

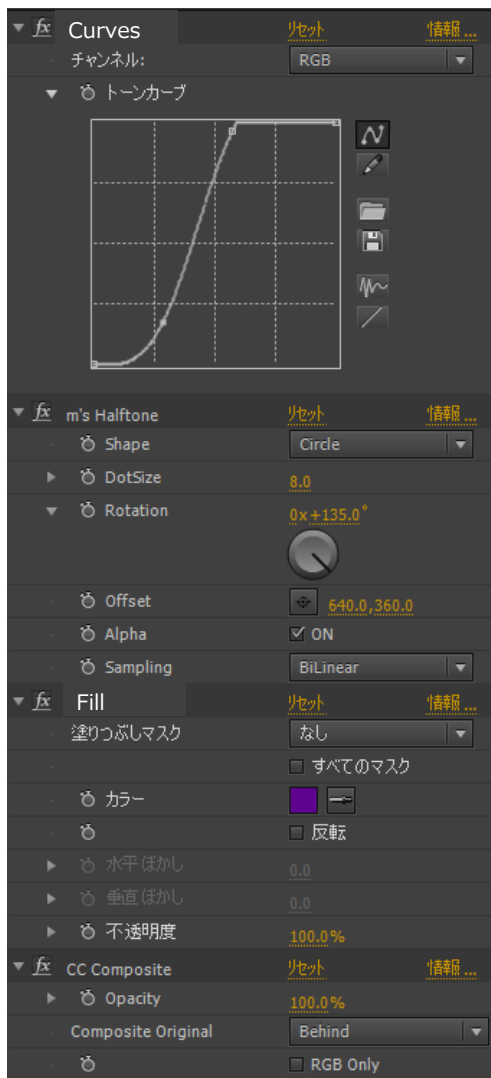


Fig4. Effect Recipe

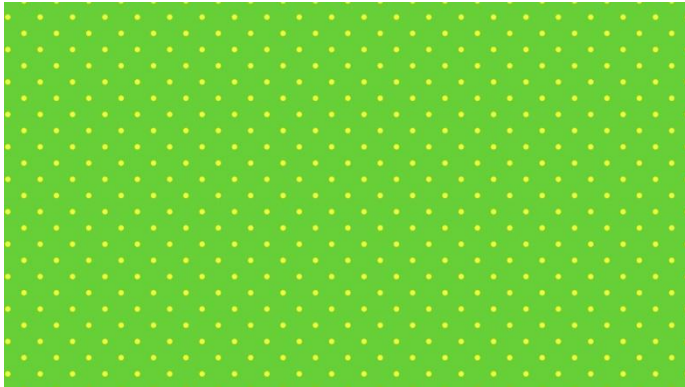
Comic style processing as shown in Fig. 3 can also be processed with only one layer in combination with the standard effect (Curves, Fill, CC Composite) shown in Fig4. It is convenient to preset these effects together.

Animation preset

Preset directory contains m's Halftone preset. Although it is for full HD, you can use it with other resolutions by adjusting the parameters.

halftone_background1

It is a preset that generates a background image of polka dots.



halftone_background 2

It is a preset that generates a comic-like background image.



halftone_transition

It is a preset that performs a transition effect using halftone.



halftone_comic style

It is a preset that processes original layer images to comic tones.

