

Automatic Installation

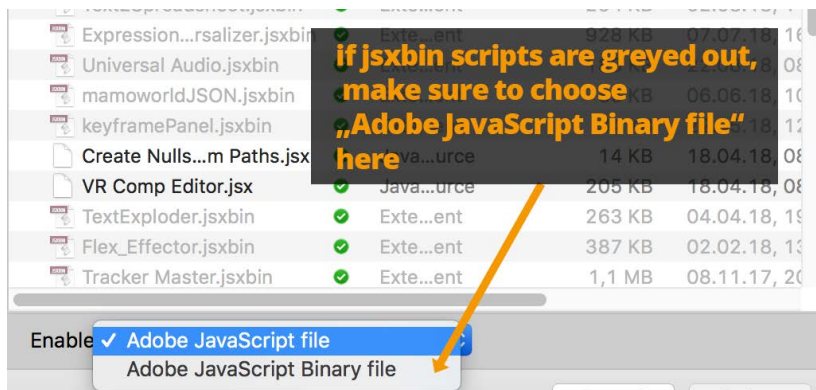
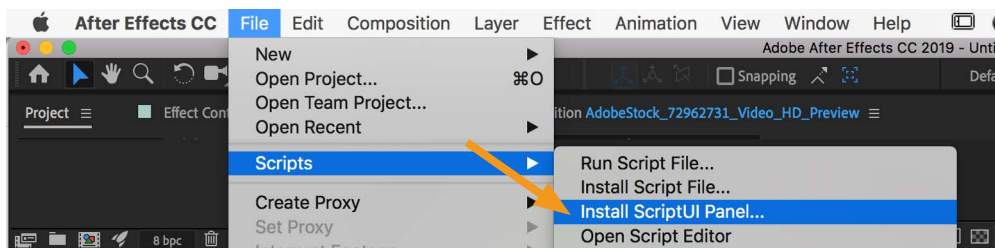
the easiest way to install GridGuide is to use the **aescripts + aeplugins manager app** which is available at

<https://aescripts.com/learn/aescripts-aeplugins-manager-app/>

Manual Installation

Current Ae versions

in the After Effects menu go to **File->Scripts->Install ScriptUI Panel...** and choose the file GridGuide.jsxbin



CC2018 and older

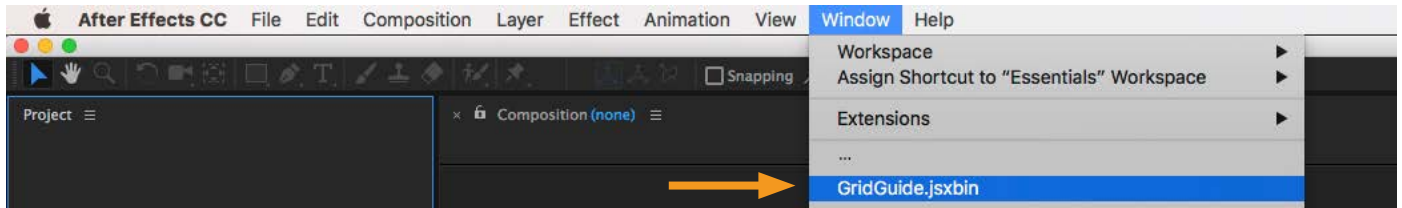
copy GridGuide.jsxbin into the "Script UI Panels" folder which is usually located here

Windows C:\Program Files\Adobe\Adobe After Effects CC 2018\Support Files\Scripts\ScriptUI Panels\
Mac OS /Applications/Adobe After Effects CC 2018/Scripts/ScriptUI Panels/

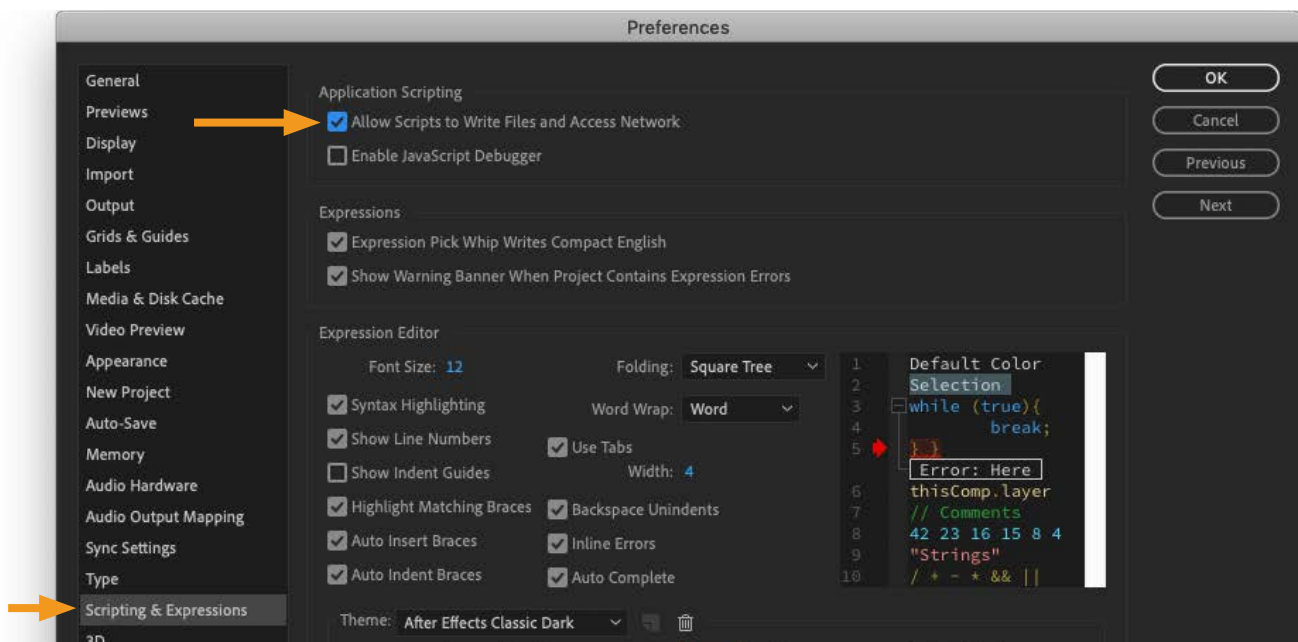
The underlined part is the location of your Ae installation. If you have not installed Ae in the default location or if you have a different version of Ae installed, adjust this accordingly.

Starting GridGuide

(Re-)start Ae and **start GridGuide** from the Ae menu Window->GridGuide.jsxbin



If GridGuide complains that **"Allow Scripts to Write Files and Access Network"** must be enabled, enable it in the preferences here:



In older After Effects versions, which don't have a section "Scripting & Expressions" in the settings, yet, you find this setting in the section "General"

Problems?

for more details about how to install scripts see

<http://aescrpts.com/knowledgebase/index/view/faq/how-to-install-and-run-scripts/>

and

<http://aescrpts.com/knowledgebase/index/view/faq/how-to-run-scripts-if-you-do-not-have-access-to-scriptui-panels-folder/>