

Installation Instructions

Please install "Backup It!" using "aescrpts + aeplugins ZXP installer" as described here.

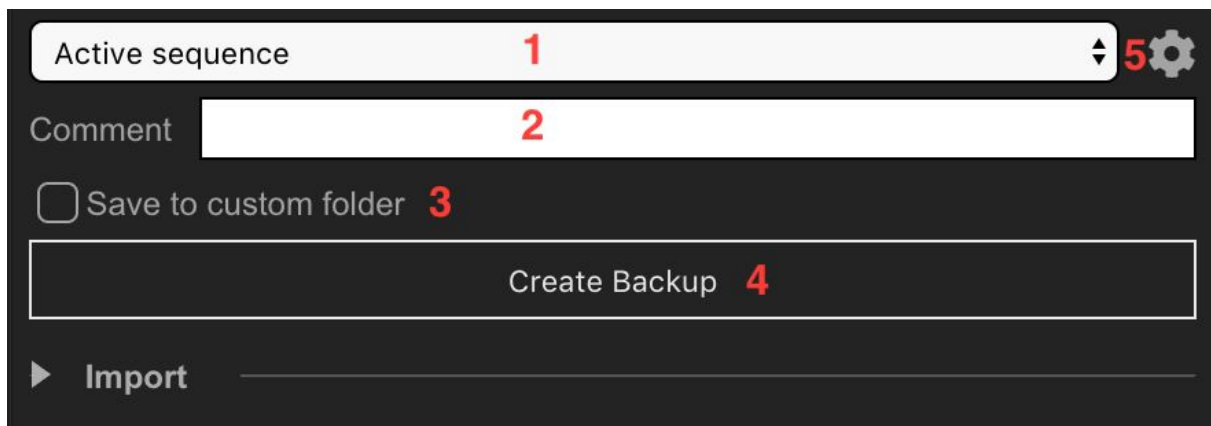
IMPORTANT: We guarantee that all functions work in the CC 2020. In the CC 2019 version all features work as well, but we can not guarantee full compatibility because we need to work on constant updates from Adobe.

1. Make sure to quit Premiere Pro if it is running.
2. Download and install aescrpts + aeplugins ZXP installer
<http://aescrpts.com/learn/zxp-installer/>
3. Start aescrpts + aeplugins ZXP installer and drag the .zxp file of "Backup It!" onto the installer window
4. In case of any issues please feel free to raise a support ticket
https://aescrpts.com/contact/?direct=1&product_id=1606
5. If you now start Premiere Pro, "Backup It" is available in the menu Window->Extensions-> Backup It

How to use it?

You can create a copy of your sequence, which will be saved as a project. Please note that this will **not collect and copy all the footages** in one folder **on the disk** (as can be done through the Project Manager), so you can't move the original footages so that the backup opens correctly.

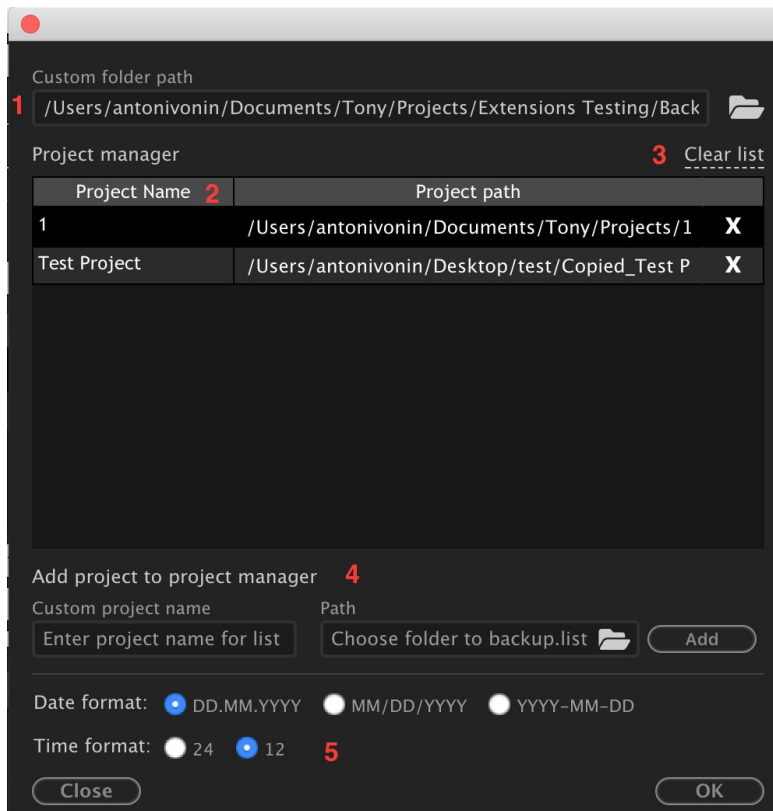
- Let's look at the **backup creation settings**:




The screenshot shows a dark-themed user interface for creating backups. It features a dropdown menu labeled 'Active sequence' with a red '1' and a gear icon with a red '5'. Below it is a text input field labeled 'Comment' with a red '2'. A checkbox labeled 'Save to custom folder' with a red '3' is positioned below the comment field. A large button labeled 'Create Backup' with a red '4' is centered below the checkbox. At the bottom, there is a button labeled 'Import' with a play icon.

1. **Type of sequence** you are copying is the active sequence, or the selected sequence in the Project window (the Project window should be active)
2. **Comment** for the backup list.
3. **Create a copy** of the sequence **in the folder** that is specified in the settings. If this checkbox is not checked, then the copy will be created in the "BackupIt_folder" folder near the main project.
4. The most useful button :)
5. **Basic settings** for creating and displaying backups.



- **Basic settings:**



1. **Custom folder path** - you can click on the folder icon and specify a path for the folder where all backups will be saved (or have been saved before, to load them into the list).
2. **Project manager** - It contains the paths of all the projects for which the backups were created. You can remove a useless project from the list, then it will not appear in the list of backups for import.
3. **Clear list** - remove all projects in the list.
4. **Add project to project manager** - if you removed a project from the list and decided to restore it, or received a project with backups from a colleague, then you can specify the path and any name for the project to be added to the list.
5. **Choose a date and time display** format that is convenient for you. After selecting, be sure to click the update button  above the backup list in the main window.

- **Import Settings:**

The screenshot shows the 'Import' settings window. At the top, there's a dropdown menu labeled 'Sequences from' with 'Test Project' selected (annotated with a red '1'). To the right of this dropdown is a refresh button (circular arrow icon) with a red '2' above it. Below the dropdown is a table with three columns: 'Name', 'Date', and 'Comment'. The table has two rows: 'First Cam' and 'Main Sequence'. Each row has a checkbox on the left, a date and time in the middle, a comment in the right, and a cross icon on the far right. The 'Main Sequence' row has the comment 'good version'. A red '3' is placed to the left of the table header. Below the table, there's a section for 'Import to' with a dropdown menu showing 'Active project' (annotated with a red '4'). Below that are two text input fields: 'Prefix' with 'pre_' (annotated with a red '5') and 'Suffix' with '_suf' (annotated with a red '6'). To the right of these fields are two calendar icons, one with a red '7' above it. Below the text fields is a checkbox labeled 'Create New Bin' (annotated with a red '8') followed by a text input field (annotated with a red '9') and a color selection dropdown. At the bottom is a large 'Import' button.

1. **Select the project** from which the backup list is displayed.
2.  - button to **update the date and time display** (if you have changed anything in the settings).
3. **Sequence backup list** belonging to the selected project. You can change the sorting of data in the list - click on the column name.
If you want to remove a sequence from the list, press the cross on the right. On Windows, this action will additionally delete the project associated with this section. On Mac OS, this action will only remove a line from the list.
To select a sequence for import, click the checkbox.
4. **Import to** - select the project to which the backup is being imported.
5. **Prefix** - add prefix to item names
6. **Suffix**- add suffix to item names
7.  - add current date to item names



- add current time to item names

8. Create New Bin - create a new bin and put the imported items into. You can create bin with your custom label color.

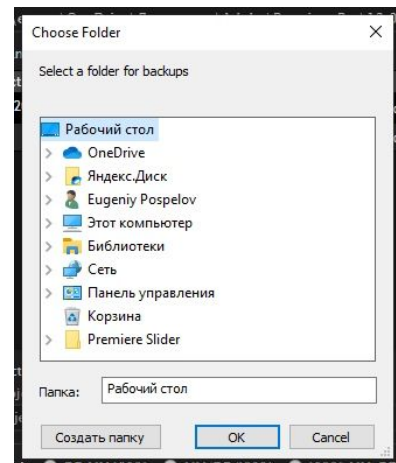
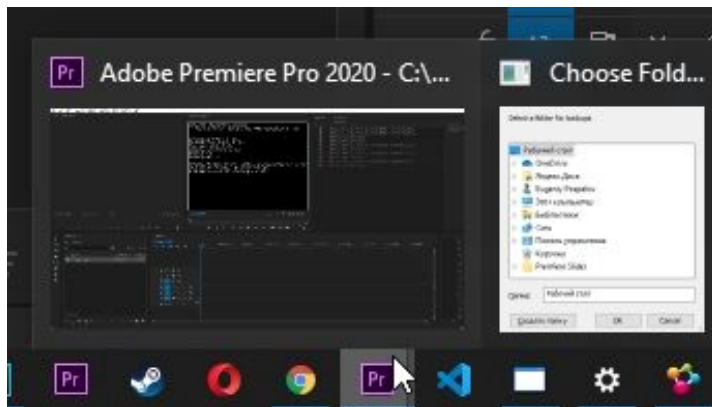
F.A.Q.

1. Why do two different projects have the same list of backups?

This happens when your projects are in the same folder and have one backup.list.

2. I do not see the window for choosing the path to the custom folder.

Sometimes the Premiere window overlaps the selection window. Perhaps, the window is hiding on the taskbar in the Premiere icon.



3. The date and time display doesn't change.

After changing them in the settings, be sure to press the update button



above the list.