

PIXEL_ENCODER

INSTRUCTIONS

HOW TO INSTALL PIXEL_ENCODER:

THE EASY WAY [AUTOMATIC]

Pixel_Encoder can easily be installed by using the aescrpts plugin manager found here:

<https://aescrpts.com/learn/aescrpts-aeplugins-manager-app/>

THE HARD WAY [MANUAL]

1. Plugins can be installed by simply drag-and-dropping them into your MediaCore folder.

2. By default, the MediaCore folder is in the following location:

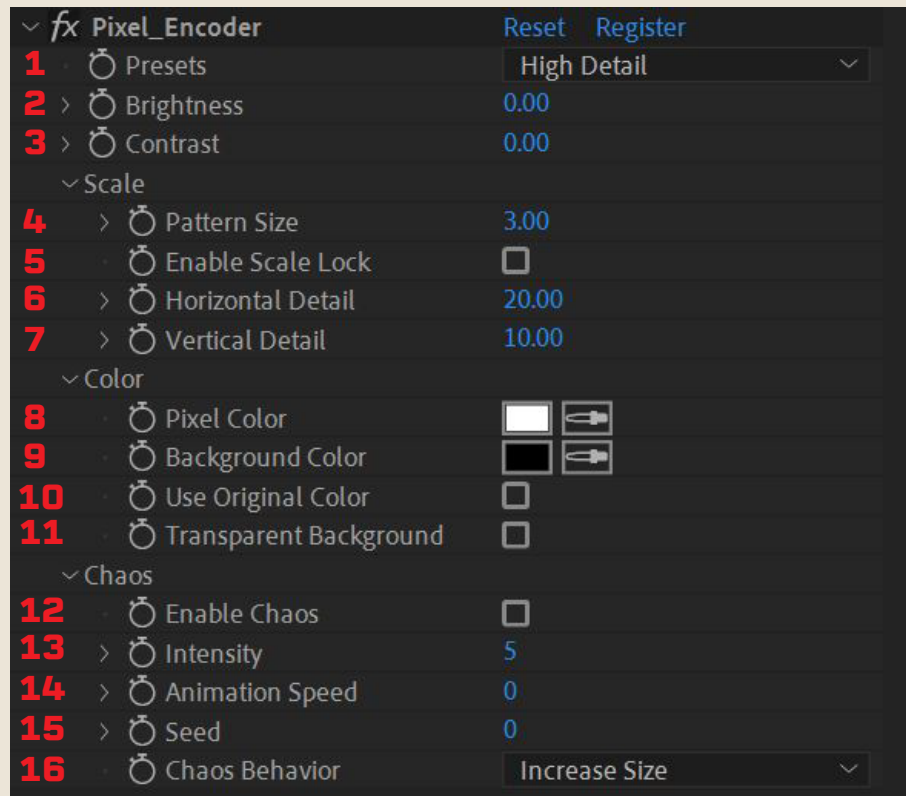
- [Windows] Program Files\Adobe\Common\Plug-ins\[version]\MediaCore
- [Mac OS] /Library/Application Support/Adobe/Common/Plug-ins/[version]/MediaCore

3. Done! You're ready to go!

TECHNICAL REQUIREMENTS:

Pixel_Encoder works with After Effects version CS5+ and Adobe Premiere version CS5+. If you run into any issues, shoot me an email at contact@megakrunch.com and I'll see what I can do to help you out!

HOW TO USE PIXEL_ENCODER:



PIXEL_ENCODER

1. Presets – Adjust the pattern used by Pixel_Encoder
2. Brightness – Adjust the brightness of the source image
3. Contrast – Adjust the contrast of the source image

SCALE

4. Pattern Size – Adjust the scale of the pixel pattern
5. Enable Scale Lock – Enabling this locks the horizontal/vertical detail to match the pattern size
6. Horizontal Detail – Adjust the underlying detail of the image
7. Vertical Detail – Adjust the underlying detail of the image

COLOR

8. Pixel Color – Adjust the color of the pixel pattern
9. Background Color – Adjust the color of the solid background
10. Use Original Color – Enabling this ignores the pixel color and instead samples the source image
11. Transparent Background – Enable/disable to remove the solid background (used for overlays and layering)

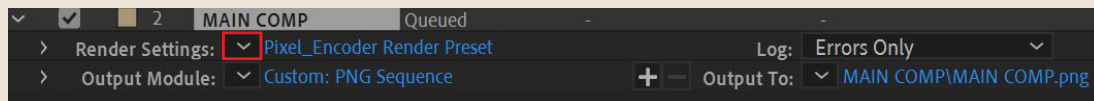
CHAOS

12. Enable Chaos – Enable/disable the chaos features
13. Intensity – Adjust the intensity of chaos distortion
14. Animation Speed – Adjust the speed of chaos distortion
15. Seed – Adjust the distortion seed value
16. Chaos Behavior – Adjust how the chaos features are handled

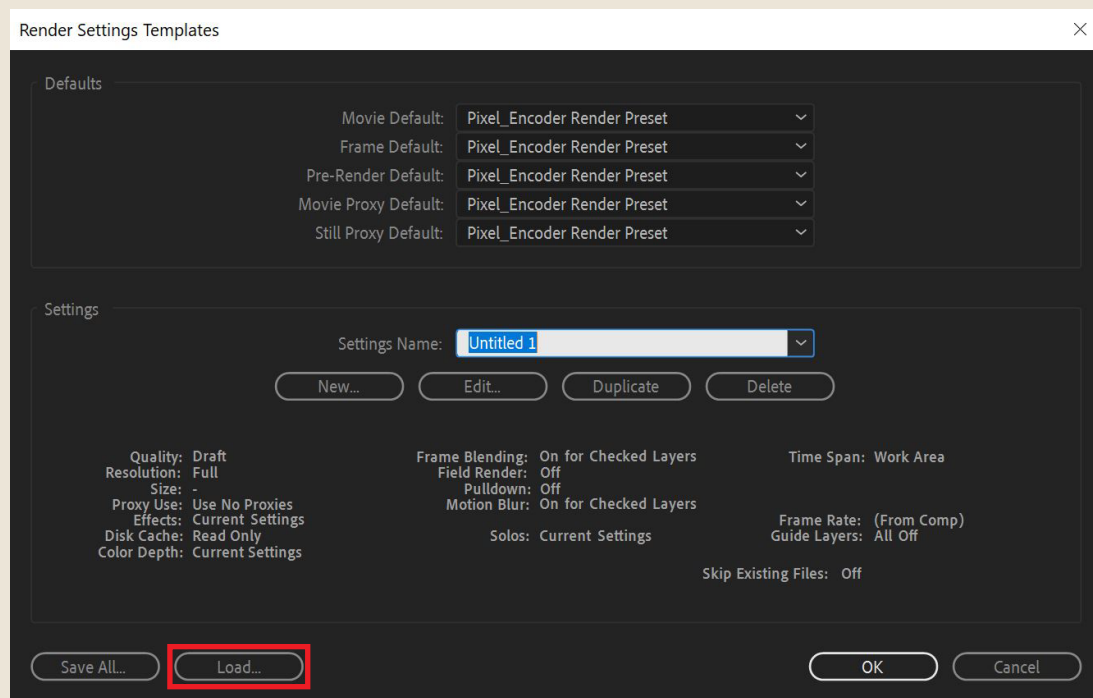
HOW TO INSTALL RENDER SETTINGS:

AFTER EFFECTS

1. In the render queue, click the drop-down arrow next to “Render Settings” and select “Make Template...”



2. In the Render Settings Templates window, select “Load...”



3. Find and select the “PixelEncoder Render Preset – After Effects” file included with your download.

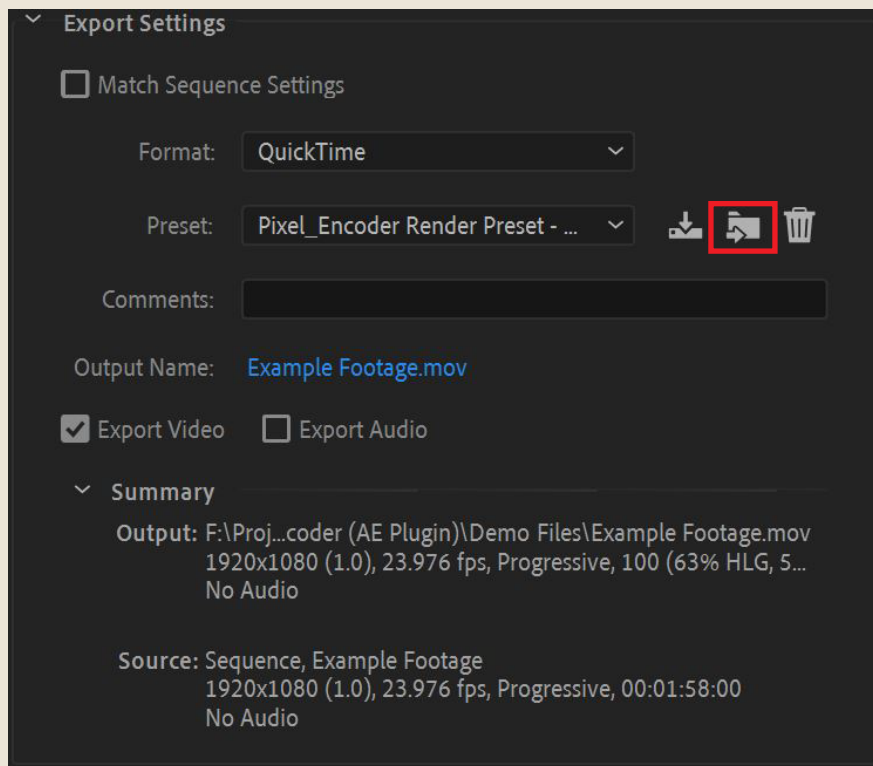
4. Done! You’re ready to export!

HOW TO INSTALL RENDER SETTINGS:

PREMIERE PRO

1. In the Export Settings window, under “Format” select “QuickTime.”

2. Click the “Import Preset” button.



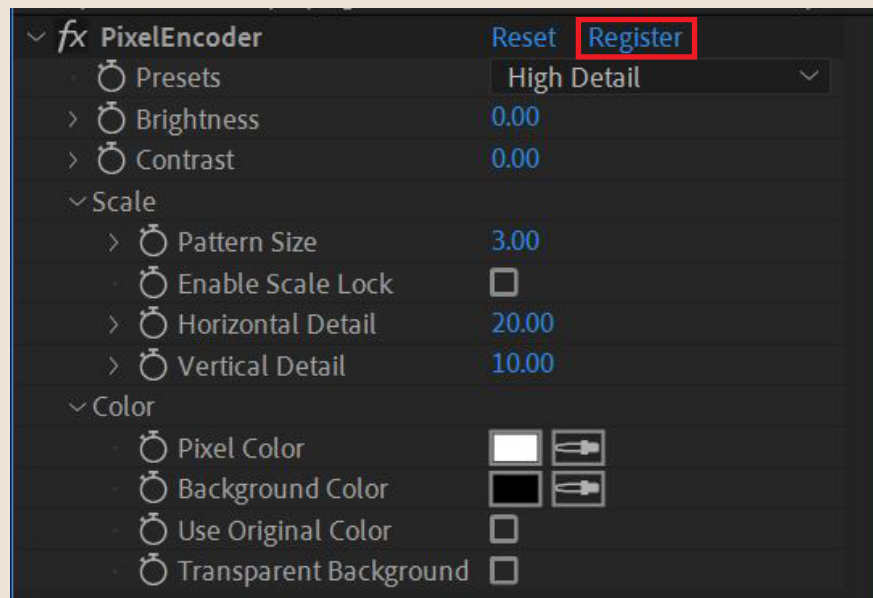
2. Find and select the “PixelEncoder Render Preset – Premiere” file included with your download.

3. Done! You’re ready to export!

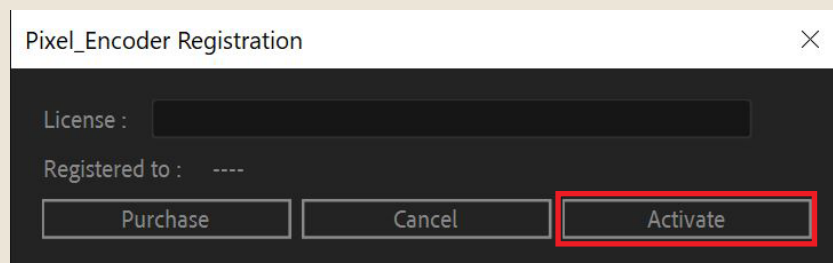
HOW TO ACTIVATE YOUR LICENSE:

AFTER EFFECTS

1. After applying the effect, click the “Register” button in your effect controls panel.



2. In the registration window, Enter your license key and hit “Activate.”

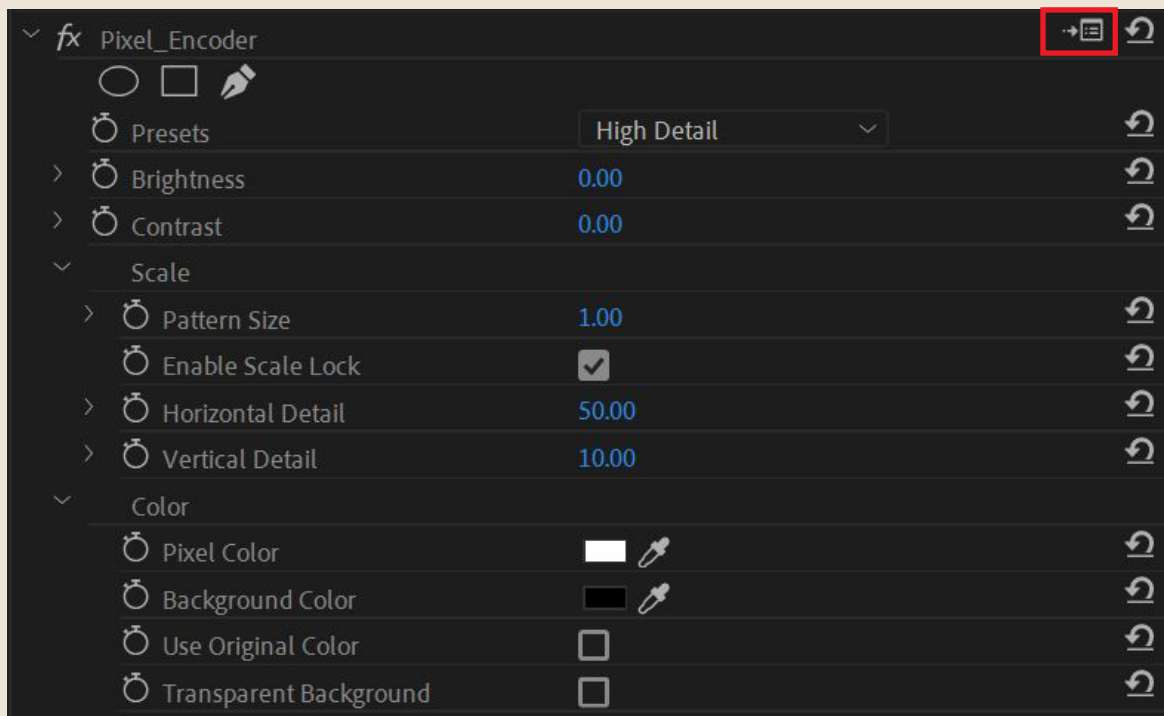


3. If your activation was successful, a window will pop up to confirm. It may take a few moments for the watermark to be removed from your composition.

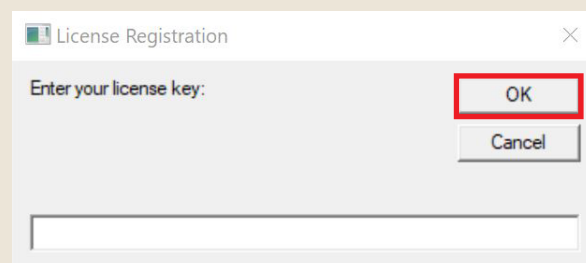
HOW TO ACTIVATE YOUR LICENSE:

PREMIERE PRO

1. After applying the effect, click the “Setup” button in your effect controls panel.



2. In the registration window, Enter your license key and hit “OK.” The registration window may look different depending on which OS you use.



3. If your activation was successful, a window will pop up to confirm. It may take a few moments for the watermark to be removed from your timeline.

ADVANCED TIPS

LAYERING MULTIPLE INSTANCES

1. Place your source footage into your timeline
 2. Duplicate your footage into a new layer
 3. Apply Pixel_Encoder to both layers
 4. In the top layer's effect controls, check the box that says "Transparent Background"
 5. Done!
-

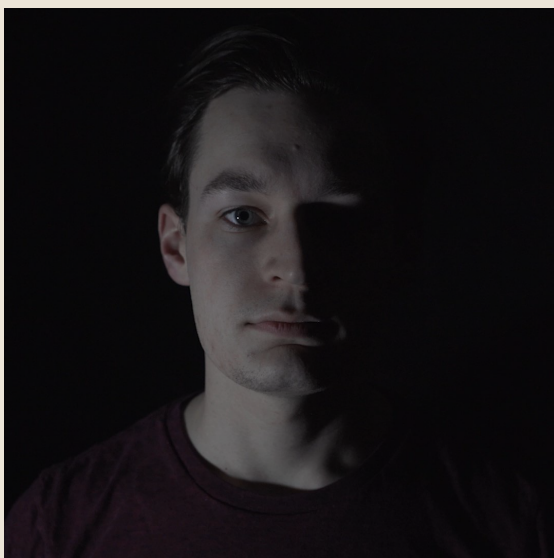
ANIMATING PROPERTIES

All of the properties in Pixel_Encoder can be keyframed to create interesting effects! Simply click the stopwatch next to any property, and animate using the timeline/graph editor.

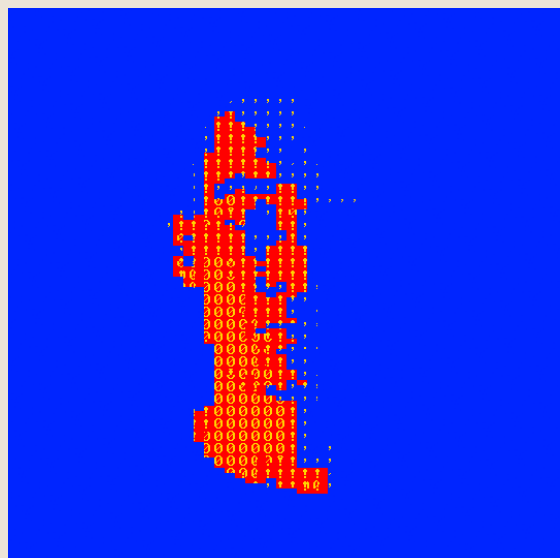
THERMAL EFFECT

Easily create a thermal camera effect in Pixel_Encoder with some effect trickery.

1. Duplicate your source footage into two layers.
2. Apply Pixel_Encoder to both layers.
3. In the top layer, check the box labeled "Transparent Background" and change the Pixel Color to a warm yellow.
4. In the bottom layer, change the background color to blue, the pixel color to red, and switch the preset to "Solid."
5. Ta-da! A quick and easy thermal effect using Pixel_Encoder!



BEFORE



AFTER