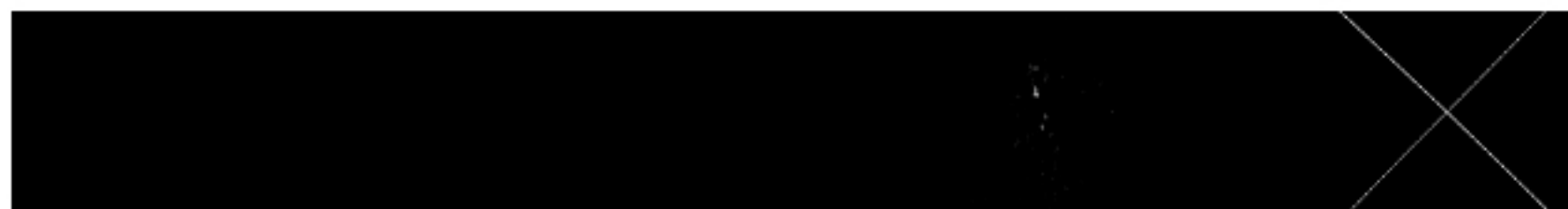




**BANGING
JOINTS™**



Thank you for your order.

To learn more about this product and its features, please read thru the following documentation below.

Questions regarding the product? Our customer service team is always happy to help.
Email us any time at bangingjoints@gmail.com



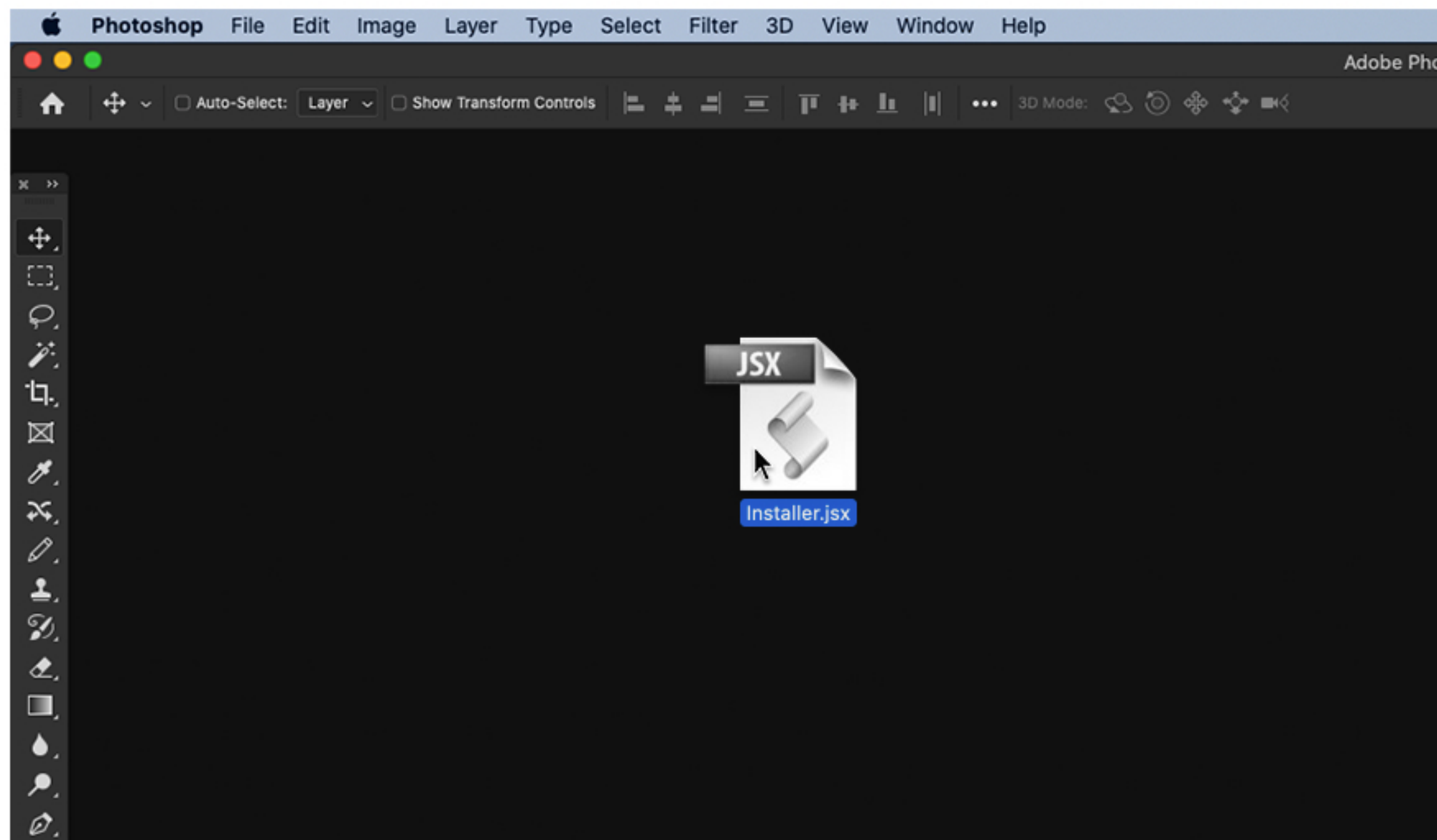
How to Install

Install the Extension Using an Installer.jsx File

1. Download Plugin and unzip the archive.
2. Run Photoshop (for Windows user: right-click on the PS icon, choose "Run As Administrator").
3. Navigate to the menu File > Scripts > Browse...
4. Select an **installer.jsx** file from the downloaded folder.
Follow the instructions. **Restart Photoshop.**
You will find extension at Window > Extensions > **GhostScan Plugin.**

Fast Install Using an Installer.jsx File

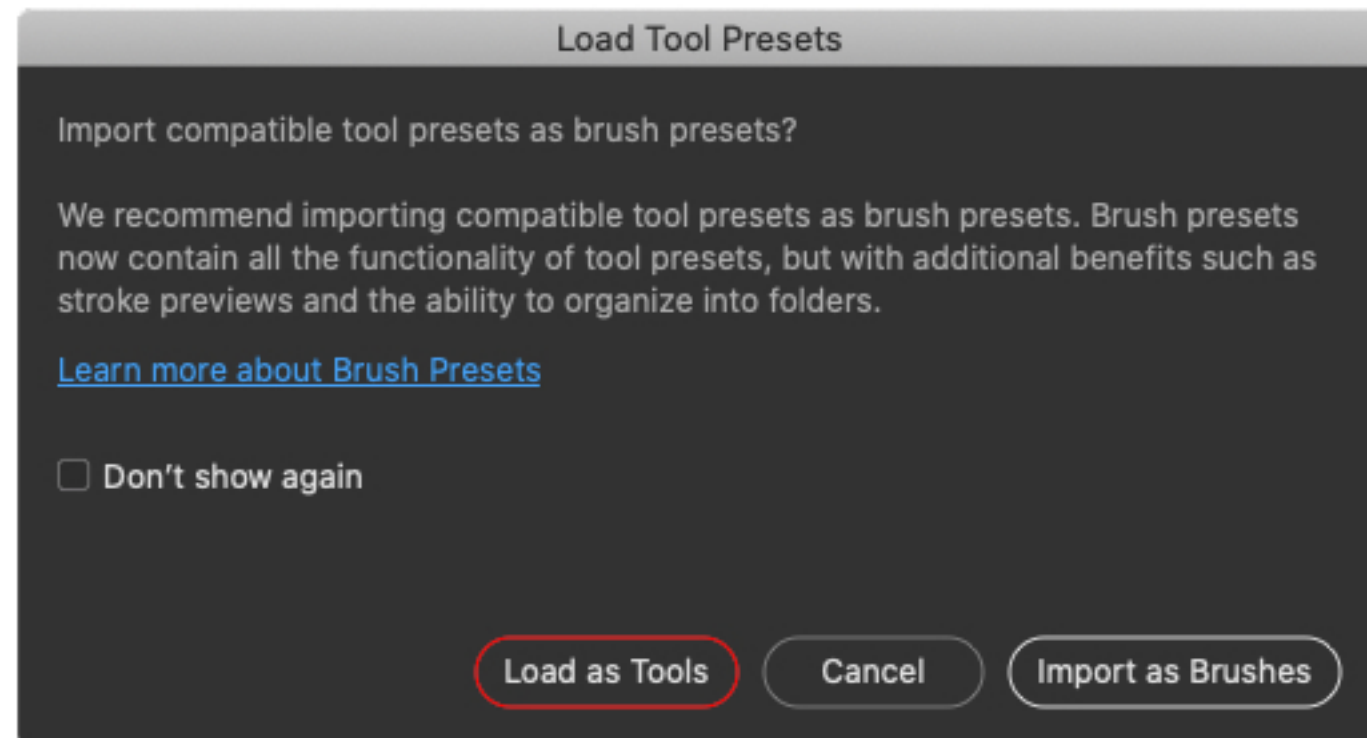
1. Drag the file **installer.jsx** onto the Photoshop
2. Follow the instructions. **Restart Photoshop.**
You will find extension at Window > Extensions > **GhostScan Plugin.**



Load a tool preset

**After installing and opening the plugin, a tool preset should be loaded.
A “Track Pen” tool preset will be installed only once.**

1. To load it, activate any Direction Render Button, and Photoshop asks you how you would like to import it.



2. Choose “Load as Tools” button to import a preset.

This step is necessary for a plugin to work.

If the Load Tool Presets dialog didn't show up, or a Tool Preset loads as Brush Preset by default, please see Troubleshooting section for a solution.

Direction Render Buttons

1 Start your work by activating any Direction Button.
The activated Direction Button creates the “Source” and “Working Layer” layers and sets up the “Pencil”(B) tool for you.

As long as any Direction Render Button activated, the plugin is in standby mode and will start the render as soon as it finds any pixels on a “Working Layer”.

Therefore, please don't forget to deactivate the Direction Render Button if you want to use brush or pencil as a standard Photoshop tool.

When **Right Direction Render Button** is activated, (X-Axis active), the effect will render horizontally from left to right.

X Axis / Y Axis

2 Defines if effect applies horizontally or vertically.

Mode

3 Normal mode with 1px Step produces a classic scan effect according to the line you draw.

Strip mode with 4px Step produces 4pixels width lines array. Line width can be defined using the **Step slider**.

Mix works as Strip mode but randomizes the lines.

Stretch mode produces a stretched effect by doubling each 1-pixel column.

Squash mode produces a squash effect according to the line you draw.

Split mode produces a stretch effect and cutts each second pixel column.

Step

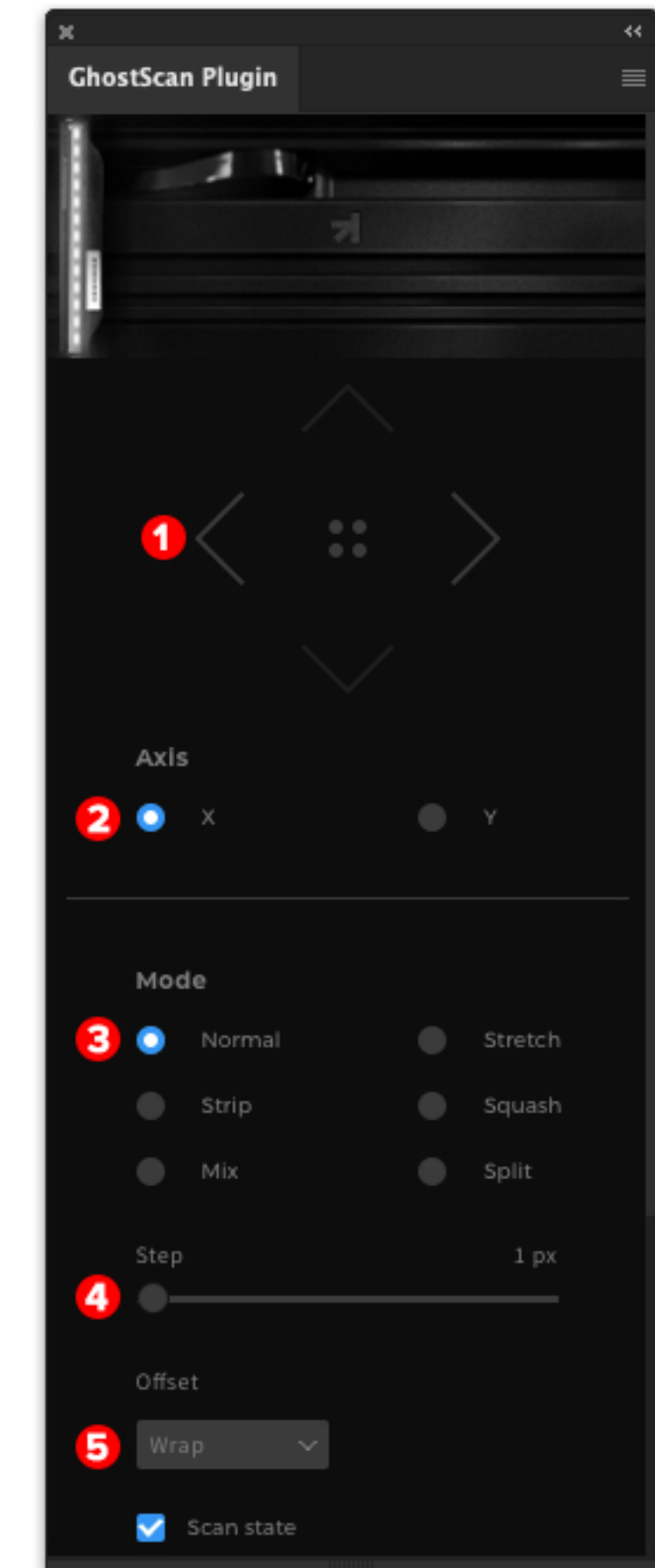
4 The slider works in **Normal, Strip, Mix** modes and allows you to define the line's spacing or thickness.

Offset

5 Allows you to define how to fill empty areas.

Scan state

5 If active, a **Scan state** group will be created each time. Serving as a scan state history and let you get back to the previous step.



Animation

- 1 If the checkbox is active, an animation will be performed after the render is finished.

Live Update

- 2 if active, the Photoshop UI will show the process of rendering.
This feature lets you see the process in real-time but slows down the script performance.

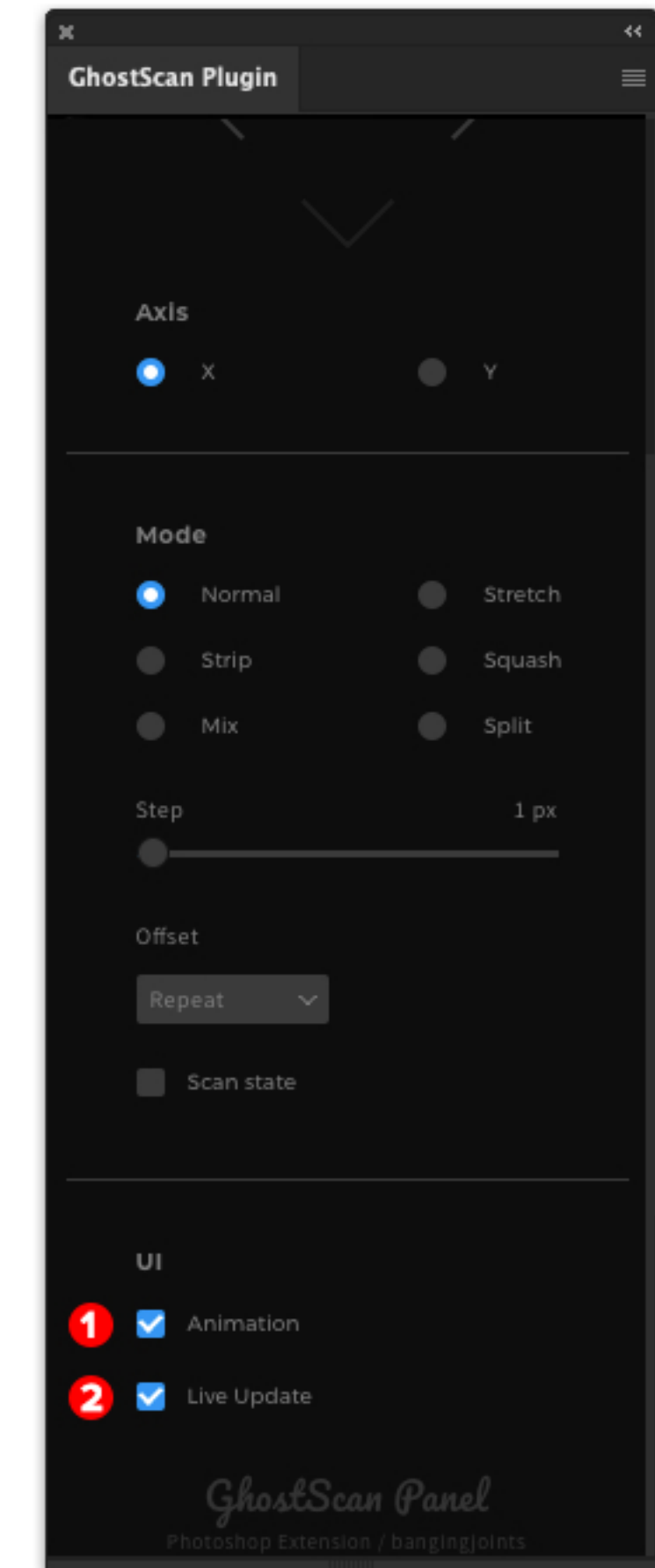
Step-by-Step Guide

Interactive Auto Render

1. Activate any Direction Render Button to automatically create the “Source” and “Working Layer” layers.
2. Draw the line on the “Working Layer” layer with the Pencil Tool (“B” shortcut). The render starts automatically.
As long as any Direction Render Button activated, the plugin is in standby mode and will start the render as soon as it finds any pixels on a “Working Layer”.

Manual Render

1. Activate any Direction Render Button to automatically create the “Source” and “Working Layer” layers.
2. Deactivate Direction Render Button and draw the line on the “Working Layer” layer with the Pencil Tool.
3. Activate the Direction Render Button to start scan process.
4. Deactivate Direction Render Button after render is finished.



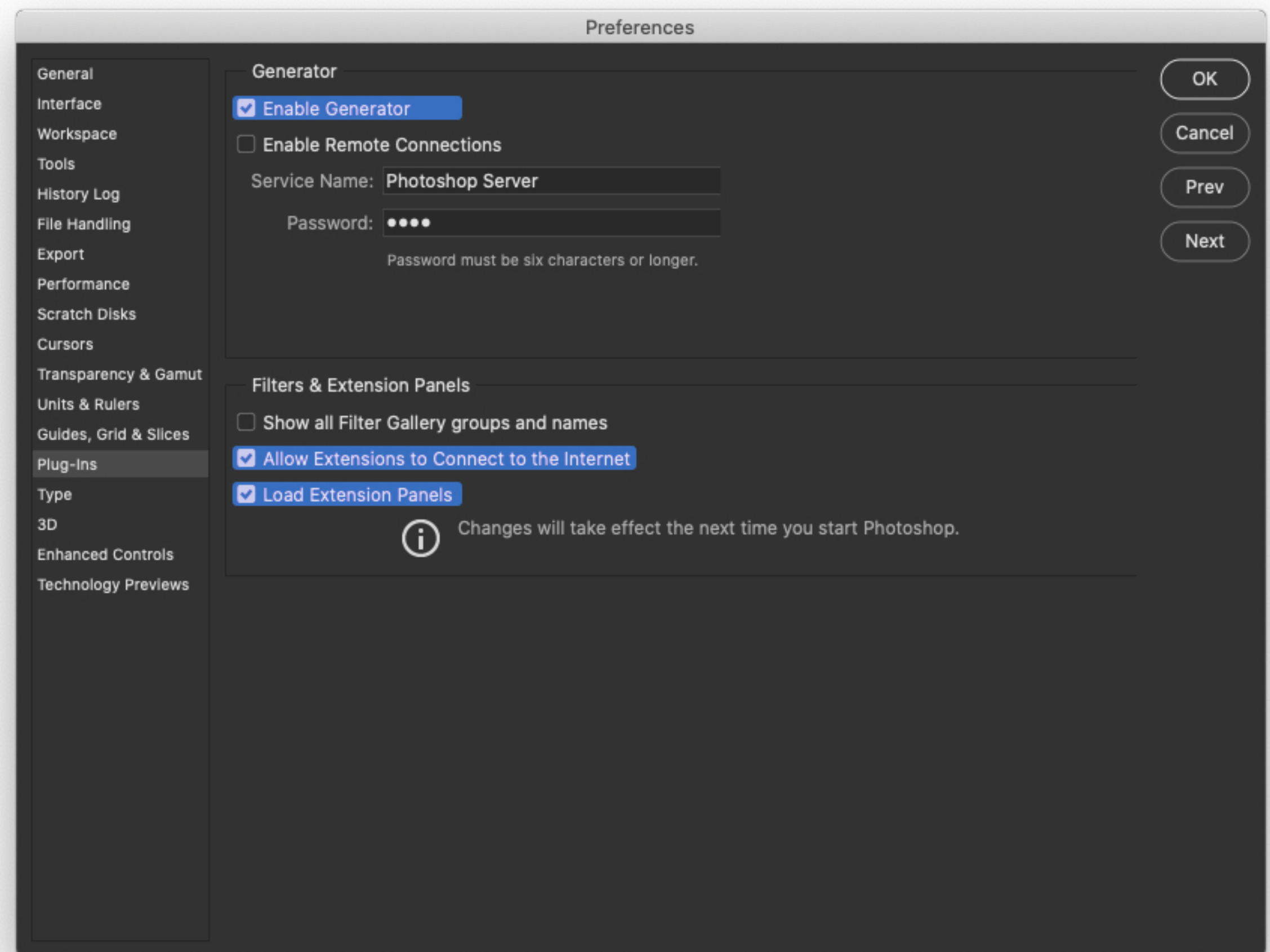
Troubleshooting

The Plugin pops out and disappears quickly.

Go to: Photoshop > Preferences > Plug-Ins

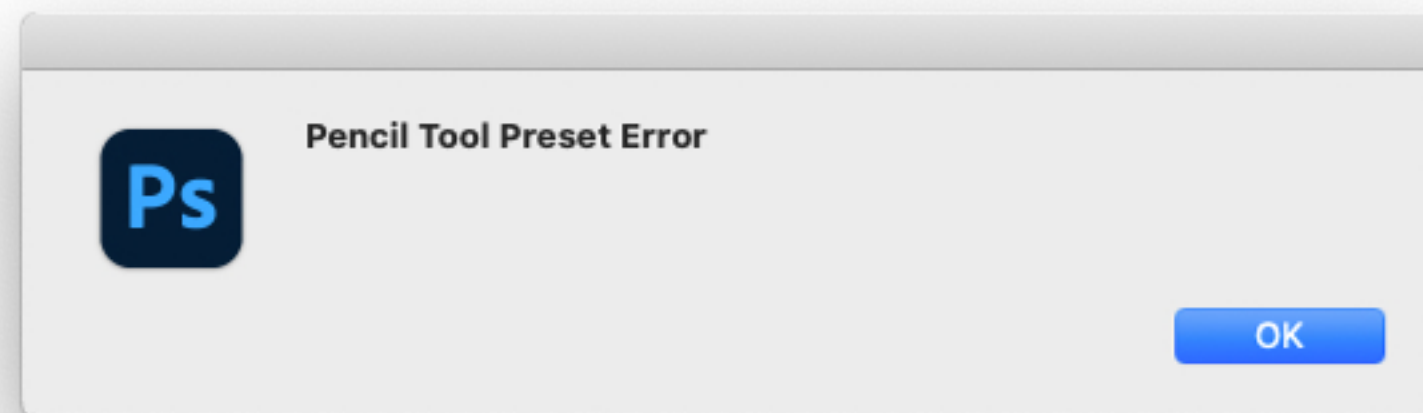
Make sure the following checkboxes are active.

If not, enable it and restart Photoshop.



Pencil Tool Preset Error

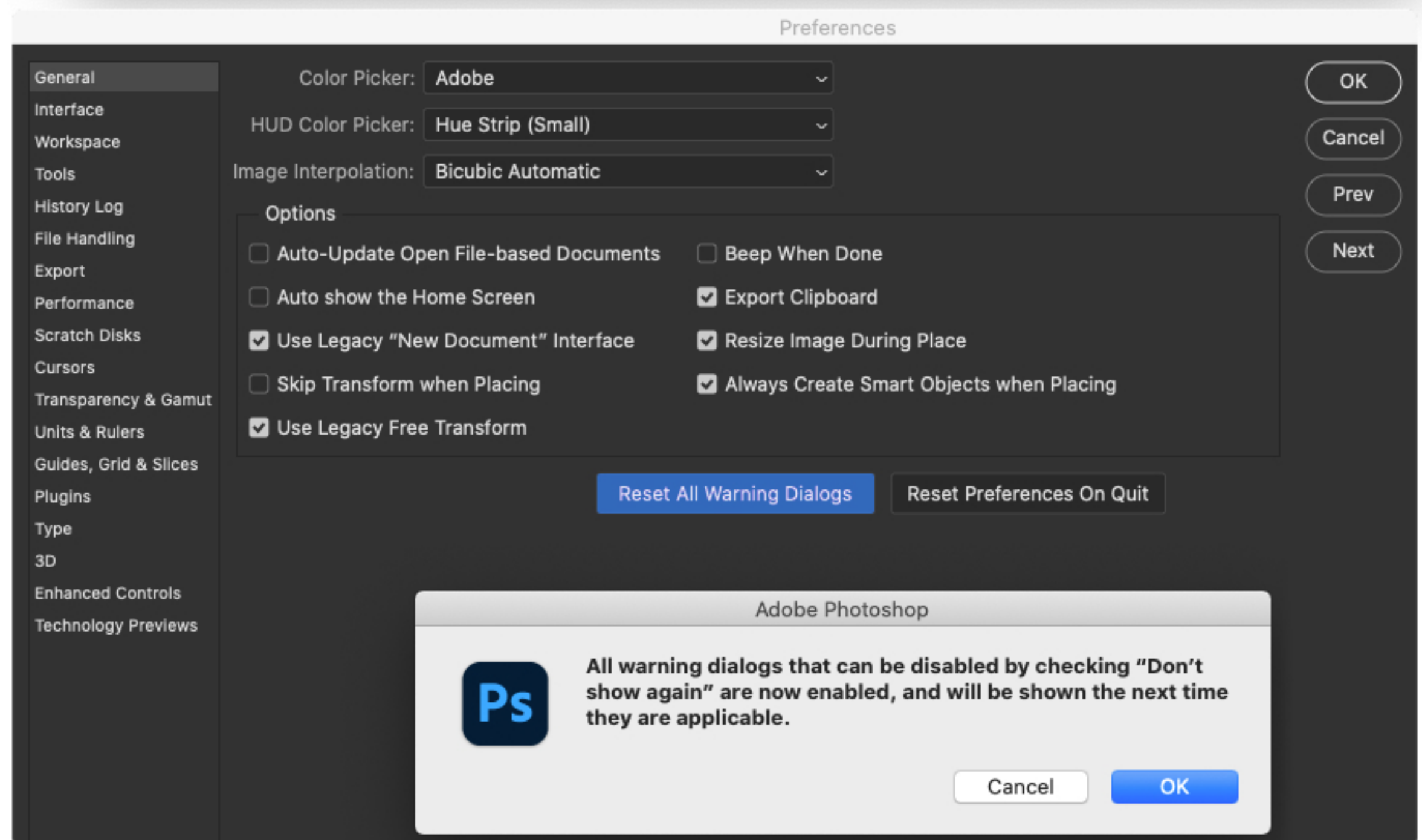
If you see this message, the Load Tool Presets dialog didn't show up, or a Tool Preset loads as Brush Preset by default.



1. Go to: Photoshop > Preferences > General
2. Click on "Reset All Warning Dialogs" and "OK"

Now you can load a Tool Preset.

1. To load it, activate any Direction Render Button, and Photoshop asks you how you would like to import it.
2. Choose "Load as Tools" button to import a preset.



How to Uninstall

Uninstall the Extension Using an UNINSTALLER.jsx File

The installer, while deploying your assets, will write the **uninstaller script** in its same folder. This can be used later on to remove the product.

1. Run Photoshop (for Windows user: right-click on the PS icon, choose "Run As Administrator").
2. Navigate to the menu File > Scripts > Browse...
3. Select a **GhostScan Plugin_V1.0.0 - UNINSTALLER** file from the downloaded folder.
4. Follow the instructions. **Restart Photoshop.**

Manual Uninstall

Windows

Go to (System): C:\Program Files (x86)\Common Files\Adobe\CEP\extensions\
Find your extension folder, select the folder and press delete.

1. Open a Finder window
2. Select Go > Go to Folder... in the menu bar.
3. Type ~/Library in the input field and click Go.

Mac (admin rights)

Go to: ~/Library/Application Support/Adobe/CEP/extensions
Find your extension folder, select the folder and delete it.

Mac (no admin rights)

Go to: ~/Users/username/Library/Application Support/Adobe/CEP/extensions
Find your extension folder, select the folder and delete it.



Hope you are happy with your purchase
Thank you for choosing our products

